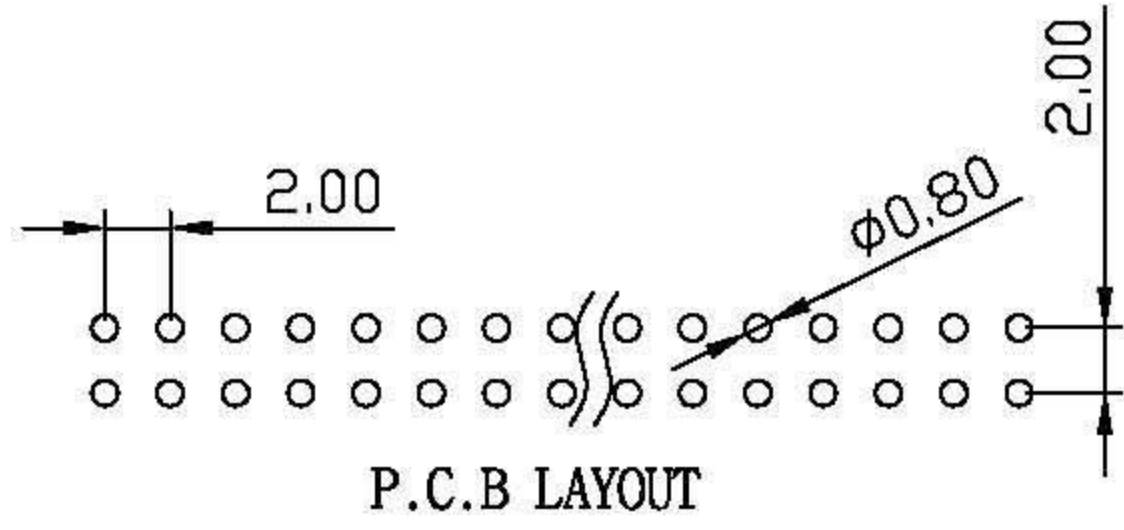
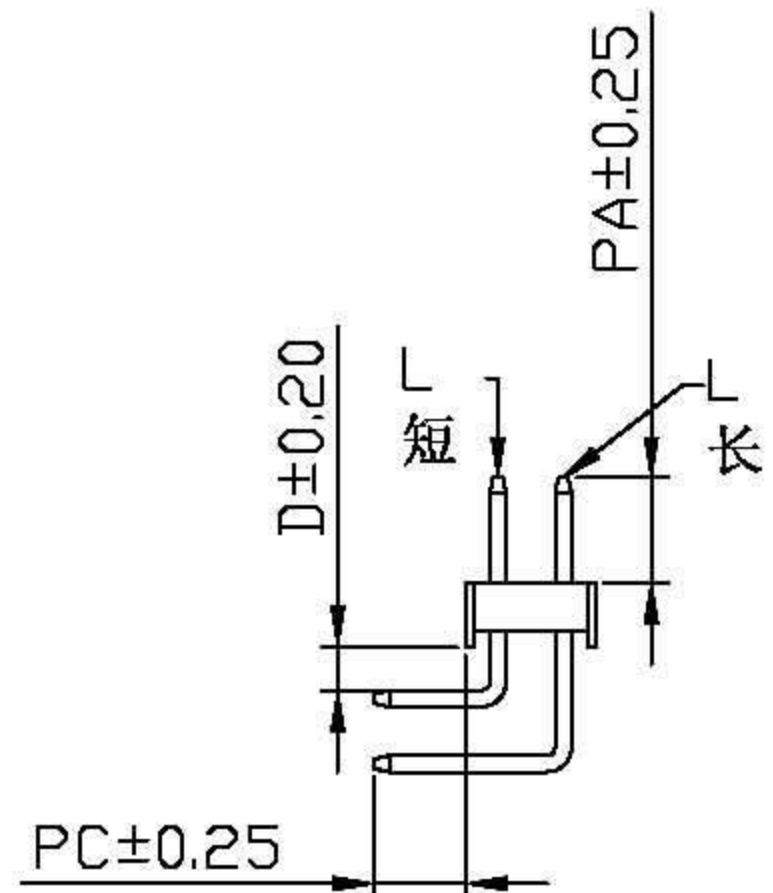
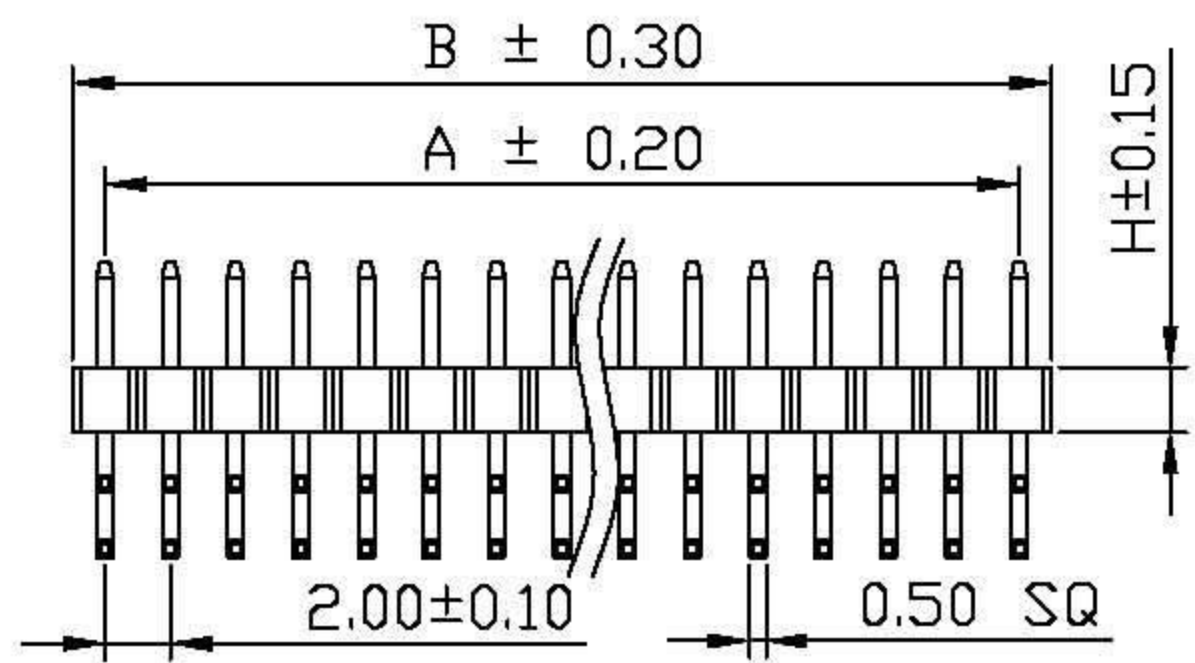
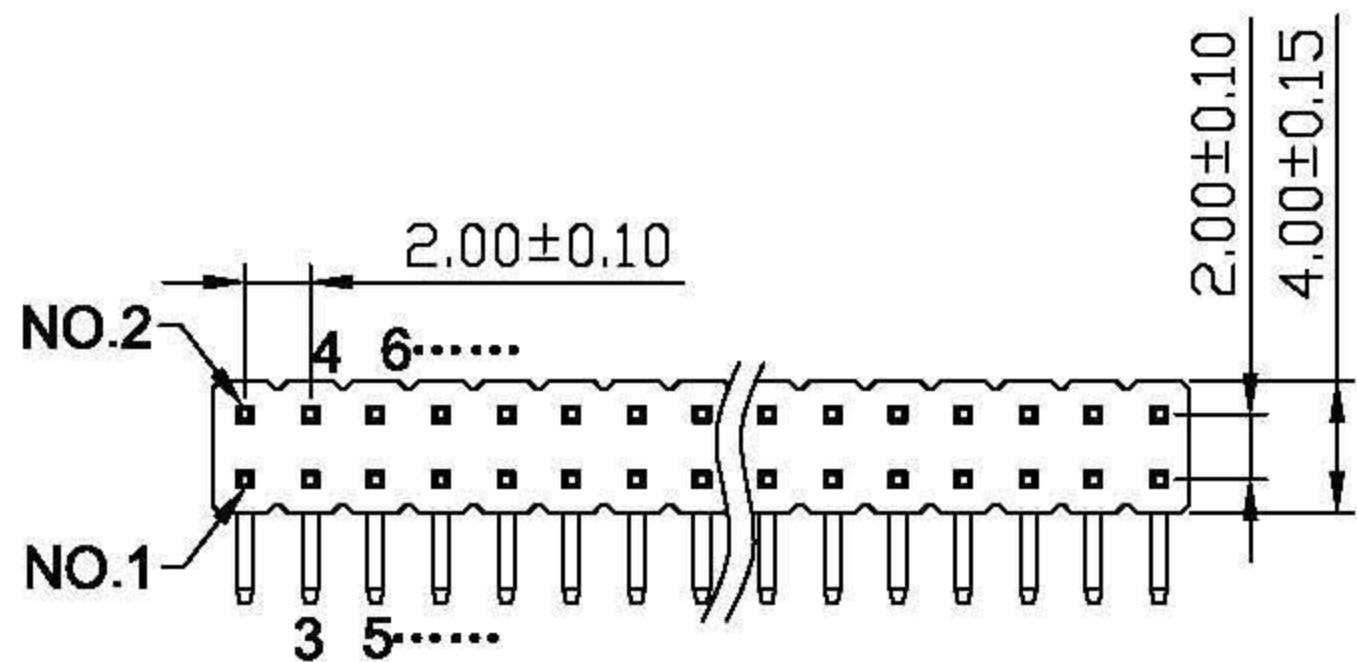


No. of Contacts	DIM A	DIM B
1	—	2.0
2	2.0	4.00
3	4.00	6.00
4	6.00	8.00
5	8.00	10.0
6	10.0	12.0
7	12.0	14.0
8	14.0	16.0
9	16.0	18.0
10	18.0	20.0
11	20.0	22.0
12	22.0	24.0
13	24.0	26.0
14	26.0	28.0
15	28.0	30.0
16	30.0	32.0
17	32.0	34.0
18	34.0	36.0
19	36.0	38.0
20	38.0	40.0
21	40.0	42.0
22	42.0	44.0
23	44.0	46.0
24	46.0	48.0
25	48.0	50.0
26	50.0	52.0
27	52.0	54.0
28	54.0	56.0
29	56.0	58.0
30	58.0	60.0
31	60.0	62.0
32	62.0	64.0
33	64.0	66.0
34	66.0	68.0
35	68.0	70.0
36	70.0	72.0
37	72.0	74.0
38	74.0	76.0
39	76.0	78.0
40	78.0	80.0



SPECIFICATIONS

Rated Current: 1.5AMP
 Contact Resistance: 20mΩ Max
 Withstand Voltage: 500V AC/DC
 Insulation Resistance: 1000MΩ Min
 Operation Temperature: -40° c to +105° c

Contact Material: Brass
 Contact Plating: Au Over Ni
 Insulator Material: Polyester (UL94V-0)
 Standard: PA6T
 Max. Processing Temp: 230° C for 30-60 seconds
 (260° C for 10 seconds)

Ordering Information

13XX -12 XX X XX R XXX 01

Plastics Height	No. of Pins Per Row	Insulator Material Option	Contact Plating	Pin Length
H=1.0mm	2x40	A=BK-PBT	G0: Gold Flash	
H=1.5mm	2x40	B=BK-PA66	G2: 5U" Gold	
H=2.0mm	2-80	C=BK-PA6T	G3: 10U" Gold	
		D=BK-PA46	G4: 15U" Gold	
		F=BK-LCP	G5: 30U" Gold	
			S0: Gold Flash/Tin	
			SN: Tin	

Item (项目)	A	B	L长	L短	D	PA	PC	H
Dimension (尺寸)	见左表	见左表	14.50	10.50	0.75	4.00	2.80	2.00
参考尺寸 (普通)	见左表	见左表						

E				Units	mm	Scale	2:1	Drawing By	Date					
D				Tolerance Unless Otherwise Specified				wang zhi gang						
C								Check By	Date					
B								zeng chun ming		Date	2013/03/18	Title	2.0单塑双排排针/90° 正弯L=14, 10	
A										Sheet	1 of 1			
REV	ZONE	LTR	DESCRIPTION.	ECN.NO.	Date			Approval By	Date	Third Angle Projection		Drawing No.	13XX12XXXXRXX01	REV
								zeng chun ming				File Path	E:GCT/PZ/2.0PH	A