

Mango CM-V310 Premium Package3 [Exynos4210 S5PV310 EVB]

<http://www.mangoboard.com/>

<http://cafe.naver.com/embeddedcrazyboys>

Crazy Embedded Laboratory

Document History

Revision	Date	Change note

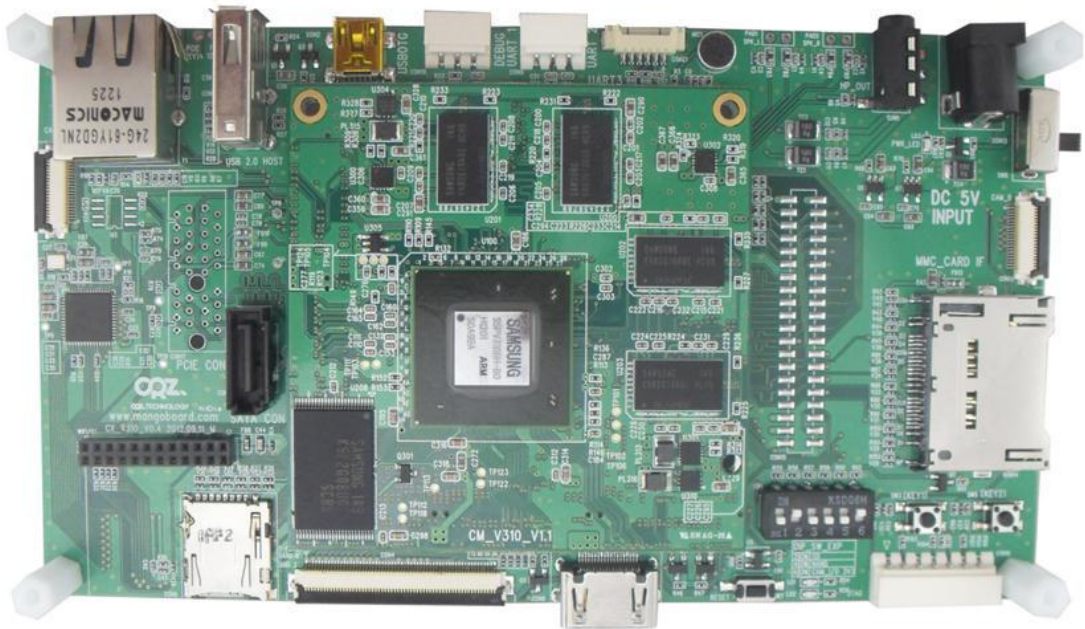
목차

제품소개.....	4
제품 사양.....	5
Boot Mode.....	10
SD Boot : 2, 6 On	10
Manual.....	11

제품소개

삼성 1GHz/1.3GHz 고성능 Cortex-A9 Application Processor 탑재 개발 보드

- Samsung Exynos 4210 S5PV310 (Cortex-A9 Dual Core Application Processor) Development Board
- DDR3 RAM 2Gbyte 기본 탑재
- Firmware, Android, Linux 지원
- USB Host, USB Device, 10/100 Mbps Ethernet, microSD socket, Audio Codec 기본 지원
- WIFI/Bluetooth, 각종 TFT LCD, 각종 Sensor (가속도, 자이로, 기압, 리모콘 등), Camera 인터페이스 확장 지원



입금 계좌: 317-0000-9066-31 (농협: 씨알지테크놀러지주식회사)

문의: help@crz-tech.com

팩스: 031-701-5024, 연락처: 031-701-5057

Mango CM-V310 Premium Package 3 [Exynos 4210 S5PV310 EVB]	구성 Mango CM-V310 CPU Borad+CX-V310 Base Board : 1ea +아크릴 : 1ea + 10.1" 1280x800 LCD With capacitive Touch(10 Point) : 1ea + SDHC 8GB Card(이미지,소스포함) : 1ea + 어댑터 (5V, 2A) : 1ea + 3pin Serial : 1ea + CM USB to RS232 Module : 1 ea + USB cable : 2ea + WiFi/BT Module : 1ea + 5M Camera Module : 1ea + SATA 옵션 포함 가격: 720,000 원 (VAT 미포함가)
--	---

카드 결제:

입금 계좌: 317-0000-9066-31 (농협: 씨알지테크놀러지주식회사)

문의: help@crz-tech.com

팩스: 031-701-5024, 연락처: 031-701-5057

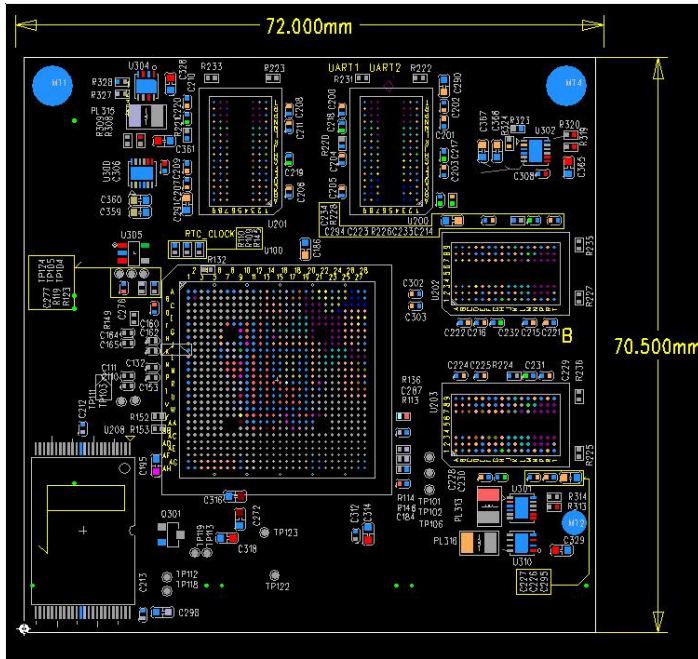
제품 사양

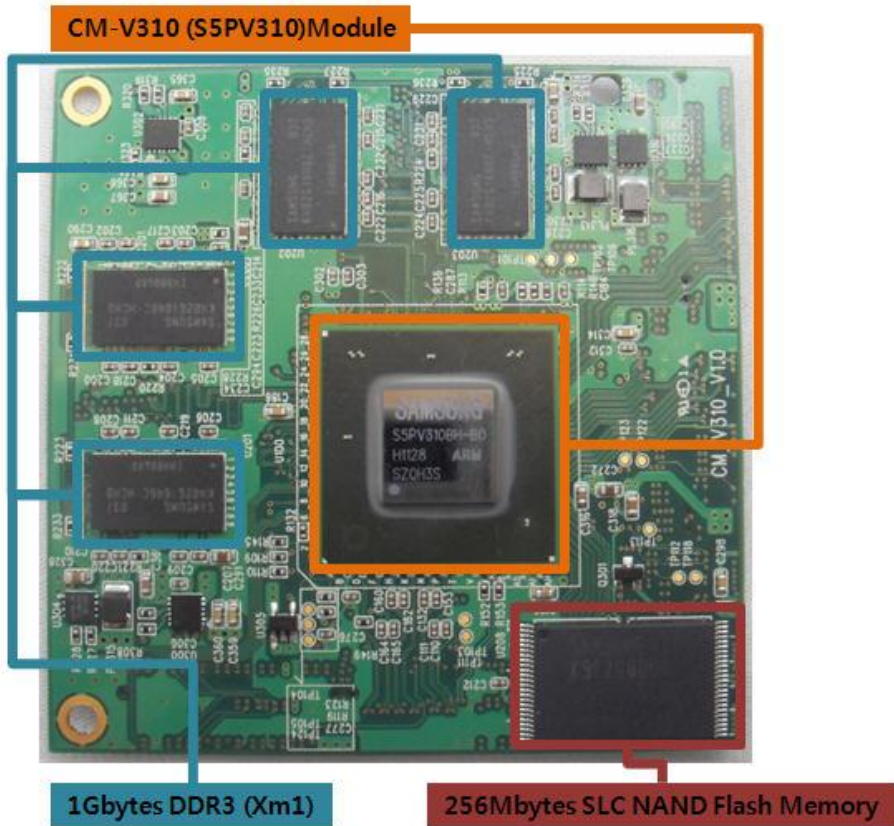
Hardware Spec

CPU	ARM Cortex A9 S5PV310 1GHz/1.3GHz Application Processor
Memory	DDR3 SDRAM 2Gbytes(2Gbitx8)
Display	7" WVGA(800x480)
	or

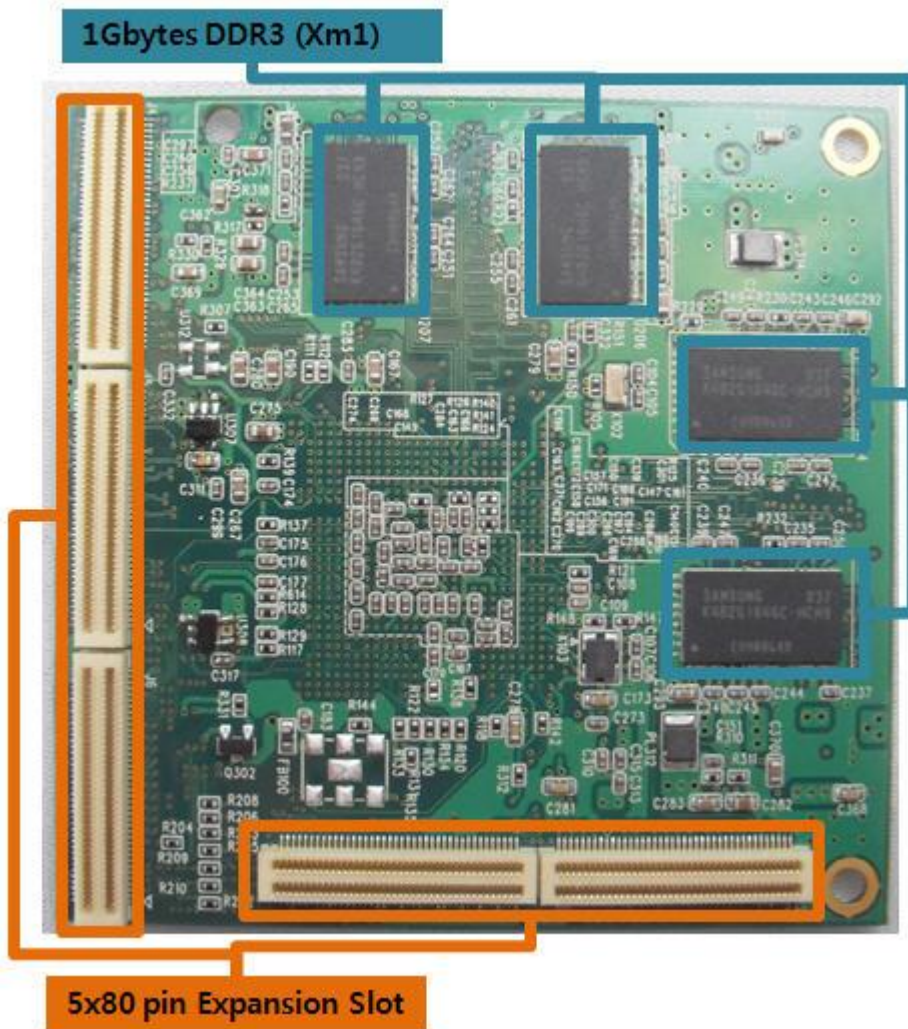
	7" 1024x600 (4point Touch) or 10.1" 1280x800 (10Point Touch) Touch Screen Interface
Audio	Wolfson WM8960 Audio Codec with 1W Stereo Speaker Amplifier
Ethernet	SMSC LAN9220 10/100Mbps Ethernet Controller
USB	USB 2.0 Host USB 2.0 OTG
SD/MMC	SD/MMC Port 2 Boot SD/MMC Port 3 WiFi & Expansion Connector
eMMC	eMMC Ver 4.4 (SD/MMC 0,1 Port)
UART	UART Port 0 BT & Expansion Connector UART Port 1 D-SUB9 DEBUG UART Port 2 D-SUB9 RS232 UART Port 3 Expansion
HDMI	V1.3(1080p Full HD)
Camera	CAM Port 2 지원 1.3M, 5M Pixel AF Camera
WiFi/BT	SDIO , 802.11BGN 지원, BT(UART0, SDIO)
SATA	SATA 2.0 지원(옵션)
Connectors	Expansion Connectors(20) eMMC, I2C etc

<Exynos 4210 S5PV310 CPU Module>

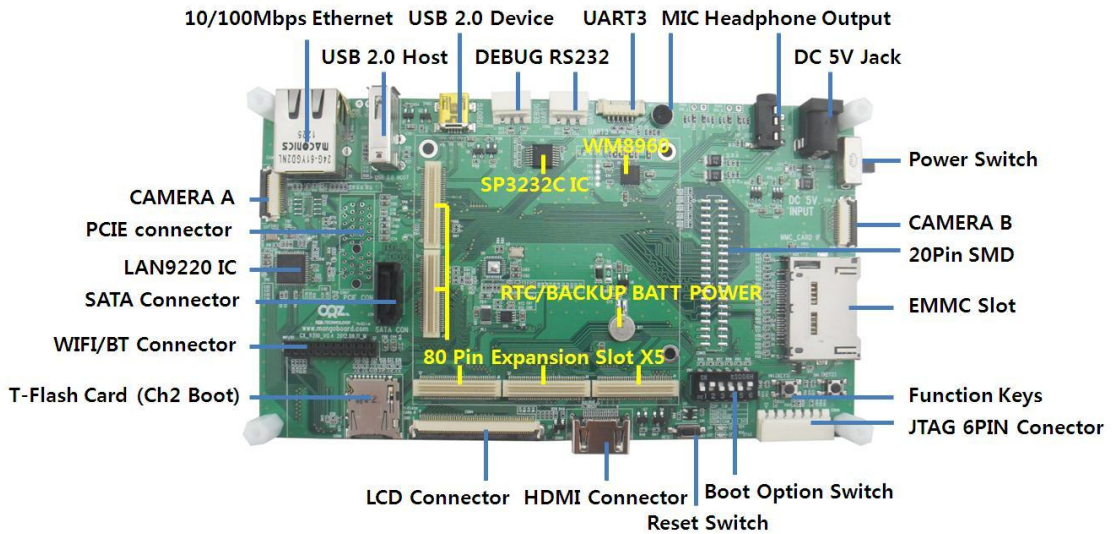
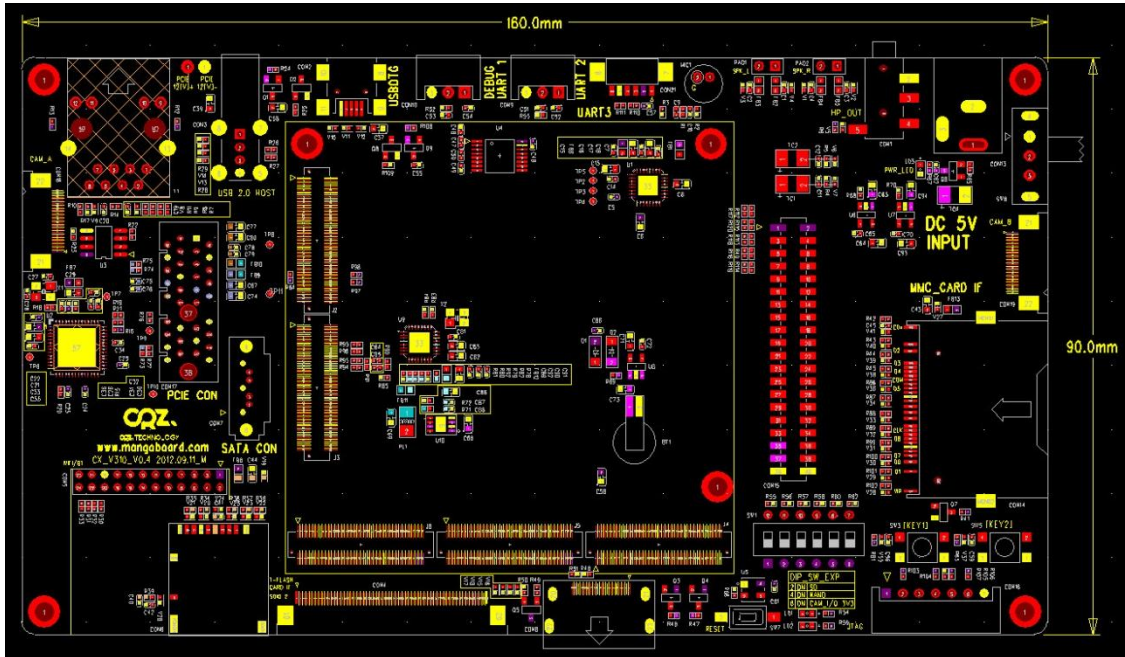




CPU	Cortex-A9 S5PV310 Dual Core 1GHz/1.3GHz Application Processor	
Memory	DDR3 SDRAM(2Gbytes)	MEM1 Port 1Gbytes, MEM2 Port 1Gbytes
	SLC NAND Flash Memory	1Gbit DDR3 SDRAM(256MB) x 8
Connectors	Expansion Connectors(80X5)	IrDA, Camera, I2S, SPI0/SPI1, SDIO0/2, EBI, UART, LCD,ETC



Base Board(CX-V310)



Boot Mode

SD Boot : 2, 6 On

Manual

Hardware Schematic download

<http://www.mangoboard.com> "Downloads > Mango310"

Source Download

<http://crztech.iptime.org:8080/Release/mango310/>

Linux, Android Manual

[https://docs.google.com/folder/d/0Bxdf_3fzbUgSZVp0WWxvS2pHOHM/
edit](https://docs.google.com/folder/d/0Bxdf_3fzbUgSZVp0WWxvS2pHOHM/edit)

또는

<http://cafe.naver.com/embeddedcrazyboys>

"망고보드 매뉴얼->망고 310 매뉴얼(S5PV310)"