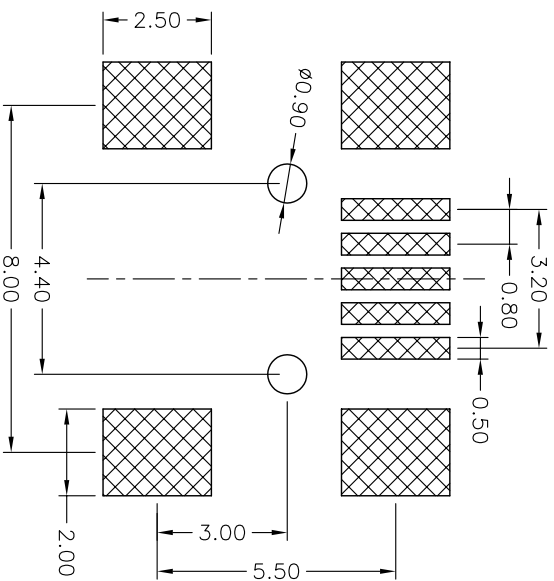
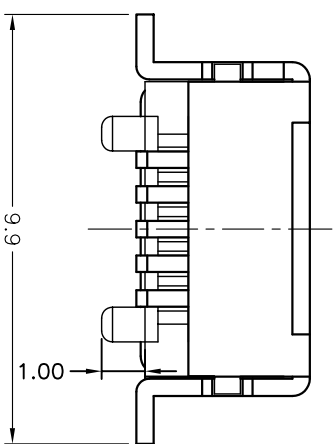
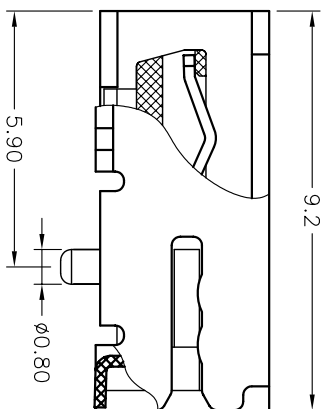
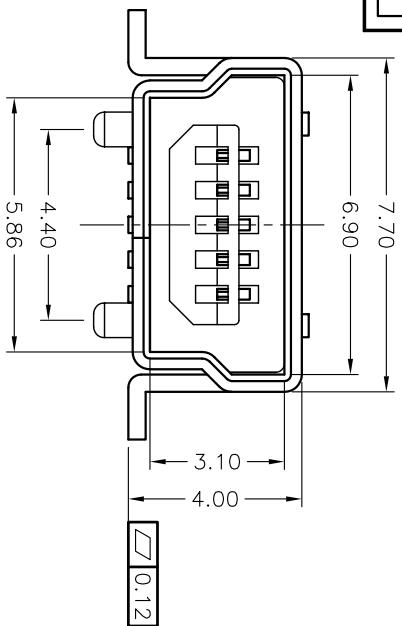
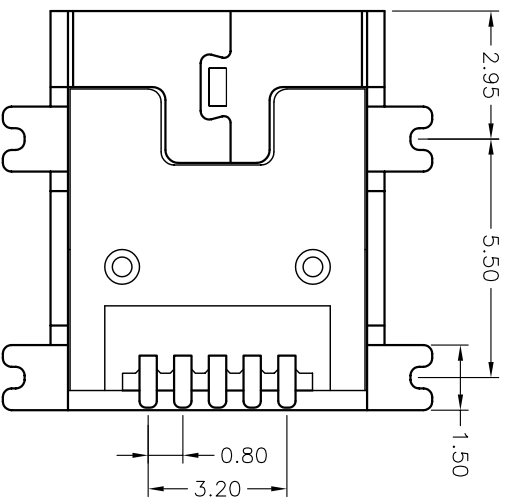




RoHS
Compliant
2002/95/EC



PCB LAYOUT



- Specification:
- 1.Electrical Characteristics:
Voltage Current rating:1AMP.30VAC
Insulation Resistance:100MΩ min
Contact Resistance:50mΩ max
 - 2.Environmental
Operating Temperature:-50°C to 85°C
 - 3.Material
Housing:LCP;Color:Black
Terminal:Phosphor bronze,T=0.25mm
Shell:Brass,T=0.40mm

X. ±0.38	X. ±4°	UNITS	mm
X. ±0.25	X. ±2°	MATL	
.XX ±0.20	.XX°	SEE NOTE	
.XXX ±0.10	.XXX°	FINISH	
		SEE NOTE	
		Q'TY	

TITLE: XML ELBC		PART NO.:	XMP01BTO-05FLBXXXXX2X0	
DR: Emily		DWG NO.:	XMP01BTO-05F	
CHKD: Jandy		SCALE:	1:1	
APPD: Jandy		SHEET:	1/1	
2006/06/10		REV.:	A	
		CUSTOMER DRAWING		

REV.	ECN.	NO.	APPD.
A	ECN060610-01		Emily