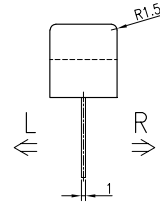
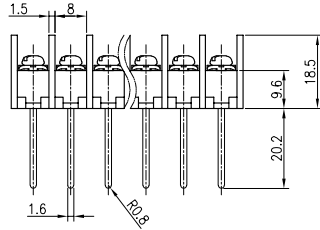
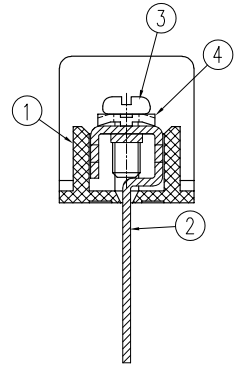
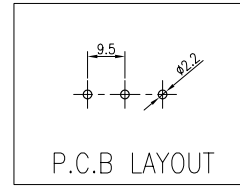
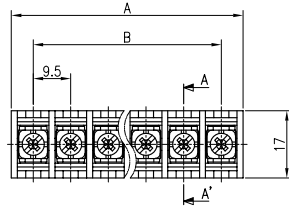
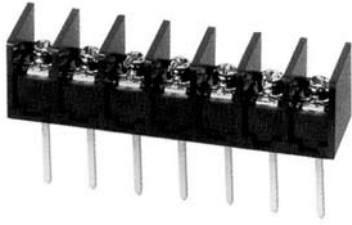


# BR-950K(\*L)

(2~20P)



(\*L) = Option  
 ※ Cover Option

- Rating : 250V 20A
- Insulation Resistance : More Than 1000MΩ DC 500V
- Withstand Voltage : AC2000V Per Minute
- Wire Size / Range : AWG16~22
- Maximum Acceptable Temperature : -40°C ~ +85°C

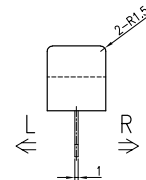
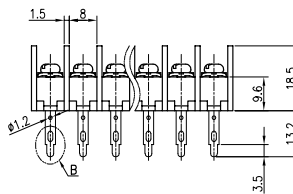
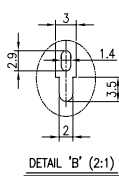
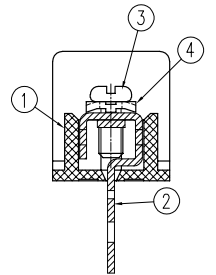
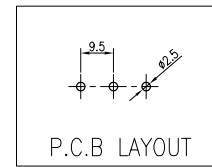
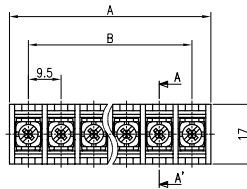
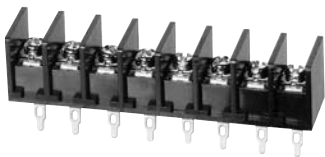
No	Component Part	Material	Standard	Plated	Remark
1	Frame	P.B.T.	UL94V-0	-	-
2	Terminal	BRASS	C2680R	Sn	-
3	Screw	SWCH10A	-	Ni	M3.5 * 8
4	WASHER	SPCC	-	Ni	□ 7.2 * 7.2

## A-B Dimension

P	1	2	3	4	5	6	7	8	9	10	11	12	13	14	15	16	17	18	19	20
A±0.8	-	20.5	30	39.5	49	58.5	68	77.5	87	96.5	106	115.5	125	134.5	144	153.5	163	172.5	182	191.5
B±0.5	-	9.5	19	28.5	38	47.5	57	66.5	76	85.5	95	104.5	114	123.5	133	142.5	152	161.5	171	180.5

# BR-950T(\*L)

(2~20P)



(\*L) = Option  
 ※ Cover Option

- Rating : 250V 20A
- Insulation Resistance : More Than 1000MΩ DC 500V
- Withstand Voltage : AC2000V Per Minute
- Wire Size / Range : AWG16~22
- Maximum Acceptable Temperature : -40°C ~ +85°C

No	Component Part	Material	Standard	Plated	Remark
1	Frame	P.B.T.	UL94V-0	-	-
2	Terminal	BRASS	C2680R	Sn	-
3	Screw	SWCH10A	-	Ni	M3.5 * 8
4	WASHER	SPCC	-	Ni	□ 7.2 * 7.2

## A-B Dimension

P	1	2	3	4	5	6	7	8	9	10	11	12	13	14	15	16	17	18	19	20
A±0.8	-	20.5	30	39.5	49	58.5	68	77.5	87	96.5	106	115.5	125	134.5	144	153.5	163	172.5	182	191.5
B±0.5	-	9.5	19	28.5	38	47.5	57	66.5	76	85.5	95	104.5	114	123.5	133	142.5	152	161.5	171	180.5

※ 조립식 단자대는 경우에 따라 수축(또는 조립) 공차가 발생할 수 있습니다.