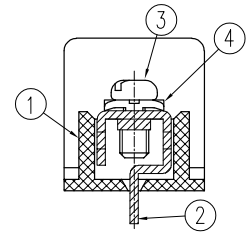
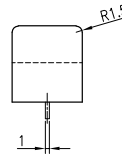
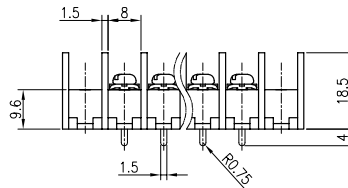
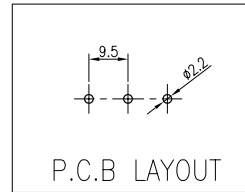
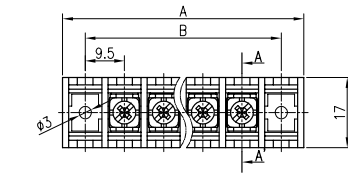


BR-950CX

(2~18P)



SECTION A-A' (2:1)

※ Cover Option

- Rating : 250V 20A
- Insulation Resistance : More Than 1000MΩ DC 500V
- Withstand Voltage : AC2000V Per Minute
- Wire Size / Range : AWG16~22
- Maximum Acceptable Temperature : -40°C ~ +85°C

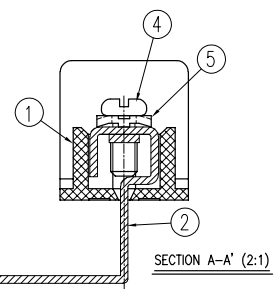
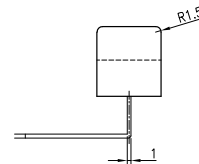
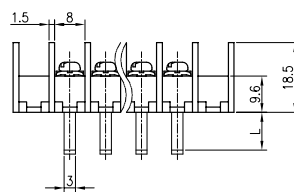
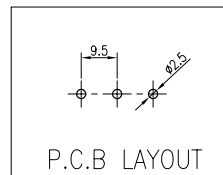
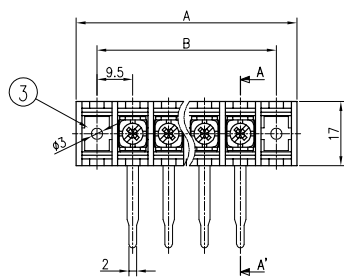
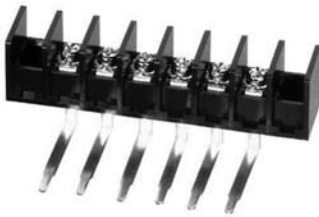
No	Component Part	Material	Standard	Plated	Remark
1	Frame	P.B.T.	UL94V-0	-	-
2	Terminal	BRASS	C2680R	Sn	-
3	X-Terminal	BRASS	C2680R	Sn	-
4	Screw	SWCH10A	-	Ni	M3.5 * 8
5	WASHER	SPCC	-	Ni	□ 7.2 * 7.2

A-B Dimension

P	1	2	3	4	5	6	7	8	9	10	11	12	13	14	15	16	17	18	19	20
A±0.8	-	36.5	46	55.5	65	74.5	84	93.5	103	112.5	122	131.5	141	150.5	160	169.5	179	188.5	198	207.5
B±0.5	-	28.5	38	47.5	57	66.5	76	85.5	95	104.5	114	123.5	133	142.5	152	161.5	171	180.5	190	199.5

BR-950FLX

(2~18P)



SECTION A-A' (2:1)

※ Cover Option

- Rating : 250V 20A
- Insulation Resistance : More Than 1000MΩ DC 500V
- Withstand Voltage : AC2000V Per Minute
- Wire Size / Range : AWG16~22
- Maximum Acceptable Temperature : -40°C ~ +85°C

No	Component Part	Material	Standard	Plated	Remark
1	Frame	P.B.T.	UL94V-0	-	-
2	Terminal	BRASS	C2680R	Sn	-
3	X-Terminal	BRASS	C2680R	Sn	-
4	Screw	SWCH10A	-	Ni	M3.5 * 8
5	WASHER	SPCC	-	Ni	□ 7.2 * 7.2

A-B Dimension

P	1	2	3	4	5	6	7	8	9	10	11	12	13	14	15	16	17	18
A	-	39.5	49	58.5	68	77.5	87	96.5	106	115.5	125	134.5	144	153.5	163	172.5	182	191.5
B	-	28.5	38	47.5	57	66.5	76	85.5	95	104.5	114	123.5	133	142.5	152	161.5	171	180.5

P.C.B