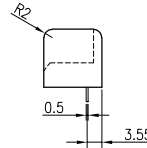
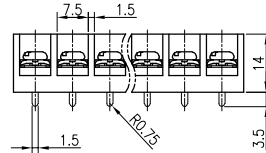
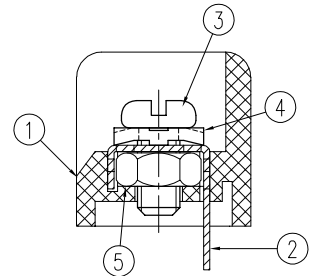
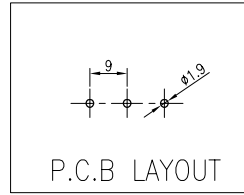
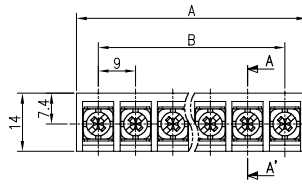


BR-900M

(2~20P)



- Rating : 250V 20A
- Insulation Resistance : More Than 1000MΩ DC 500V
- Withstand Voltage : AC2000V Per Minute
- Wire Size / Range : AWG16~22
- Maximum Acceptable Temperature : -40°C ~ +85°C

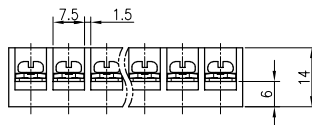
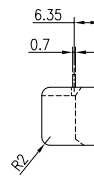
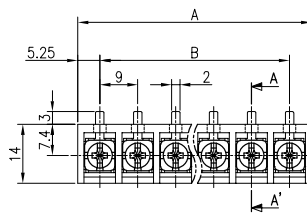
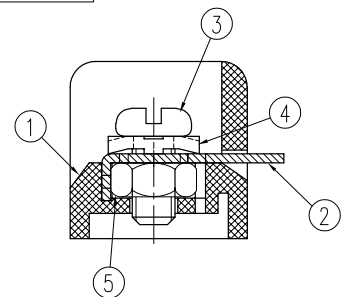
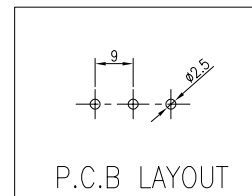
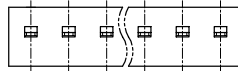
No	Component Part	Material	Standard	Plated	Remark
1	Frame	P.B.T.	UL94V-0	-	-
2	Terminal	BRASS	C2680R	Ni	-
3	Screw	SWCH10A	-	Ni	M3.5 * 7
4	WASHER	SPCC	-	Ni	□ 7.2 * 7.2
5	Nut	SWCH10A	-	-	-

A-B Dimension

P	1	2	3	4	5	6	7	8	9	10	11	12	13	14	15	16	17	18	19	20
A±0.8	-	19.5	28.5	37.5	46.5	55.5	64.5	73.5	82.5	91.5	100.5	109.5	118.5	127.5	136.5	145.5	154.5	163.5	172.5	181.5
B±0.5	-	9	18	27	36	45	54	63	72	81	90	99	108	117	126	135	144	153	162	171

BR-900MB

(2~20P)



- Rating : 250V 20A
- Insulation Resistance : More Than 1000MΩ DC 500V
- Withstand Voltage : AC2000V Per Minute
- Wire Size / Range : AWG16~22
- Maximum Acceptable Temperature : -40°C ~ +85°C

No	Component Part	Material	Standard	Plated	Remark
1	Frame	P.B.T.	UL94V-0	-	-
2	Terminal	BRASS	C2680R	Ni	-
3	Screw	SWCH10A	-	Ni	M3.5 * 7
4	WASHER	SPCC	-	Ni	□ 7.2 * 7.2
5	Nut	SWCH10A	-	-	-

A-B Dimension

P	1	2	3	4	5	6	7	8	9	10	11	12	13	14	15	16	17	18	19	20
A±0.8	-	19.5	28.5	37.5	46.5	55.5	64.5	73.5	82.5	91.5	100.5	109.5	118.5	127.5	136.5	145.5	154.5	163.5	172.5	181.5
B±0.5	-	9	18	27	36	45	54	63	72	81	90	99	108	117	126	135	144	153	162	171