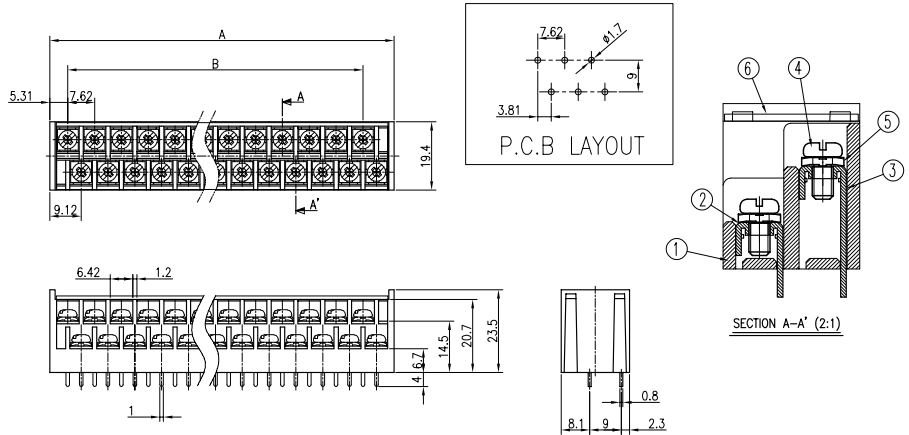
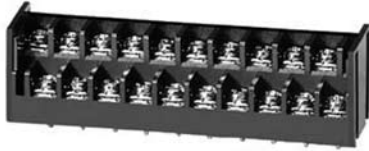


BR-762C2

(8~40P)



※ Cover Option

- Rating : 250V 10A
- Insulation Resistance : More Than 1000MΩ DC 500V
- Withstand Voltage : AC2000V Per Minute
- Wire Size / Range : AWG18~26
- Maximum Acceptable Temperature : -40°C ~ +85°C

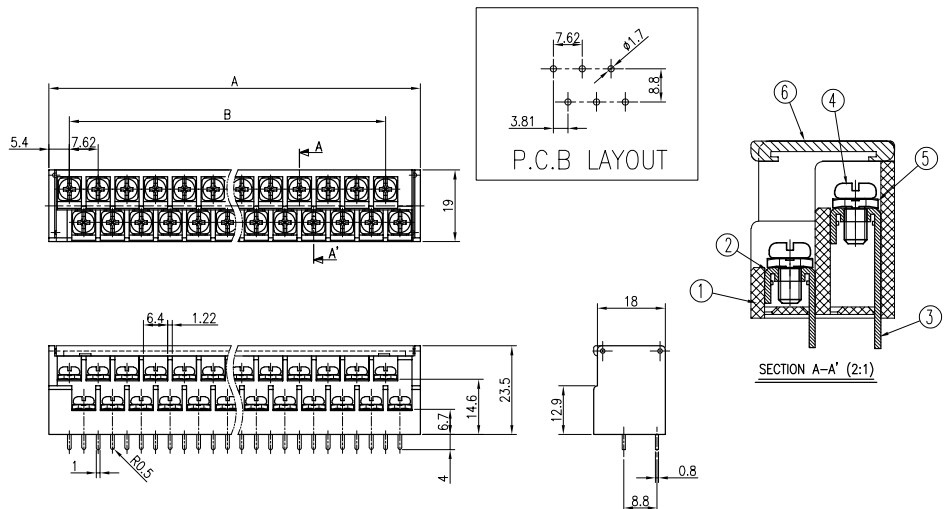
No	Component Part	Material	Standard	Plated	Remark
1	Frame	P.B.T.	UL94V-0	-	-
2	Terminal #1	BRASS	C2680R	Sn	-
3	Terminal #2	BRASS	C2680R	Sn	-
4	Screw	SWCH10A	-	Ni	M3 * 6
5	WASHER	SPCC	-	Ni	□ 6 * 6
6	Cover	PVC	-	-	NP

A-B Dimension

P	8	10	12	14	16	18	20	22	24	26	28	30	32	34	36	38	40
A±0.8	37.28	44.9	52.52	60.14	67.76	75.38	83	90.62	98.24	105.86	113.48	121.1	128.72	136.34	143.96	151.58	159.2
B±0.5	22.86	30.48	38.10	45.72	53.34	60.96	68.58	76.20	83.82	91.44	99.06	106.68	114.30	121.92	129.54	137.16	144.78

BR-762C2N

(8~40P)



※ Cover Option

- Rating : 250V 10A
- Insulation Resistance : More Than 1000MΩ DC 500V
- Withstand Voltage : AC2000V Per Minute
- Maximum Acceptable Temperature : -40°C ~ +85°C

No	Component Part	Material	Standard	Plated	Remark
1	Frame	P.B.T.	UL94V-0	-	-
2	Terminal #1	BRASS	C2680R	Sn	-
3	Terminal #2	BRASS	C2680R	Sn	-
4	Screw	SWCH10A	-	Ni	M3 * 6
5	WASHER	SPCC	-	Ni	□ 6 * 6
6	Cover	PC	UL94HB	-	투명

A-B Dimension

P	8	10	12	14	16	18	20	22	24	26	28	30	32	34	36	38	40
A±0.8	37.28	44.9	52.52	60.14	67.76	75.38	83	90.62	98.24	105.86	113.48	121.1	128.72	136.34	143.96	151.58	159.2
B±0.5	22.86	30.48	38.10	45.72	53.34	60.96	68.58	76.20	83.82	91.44	99.06	106.68	114.30	121.92	129.54	137.16	144.78