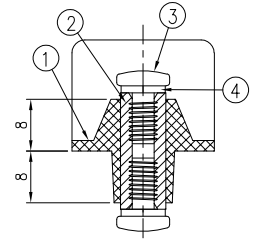
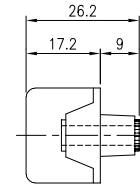
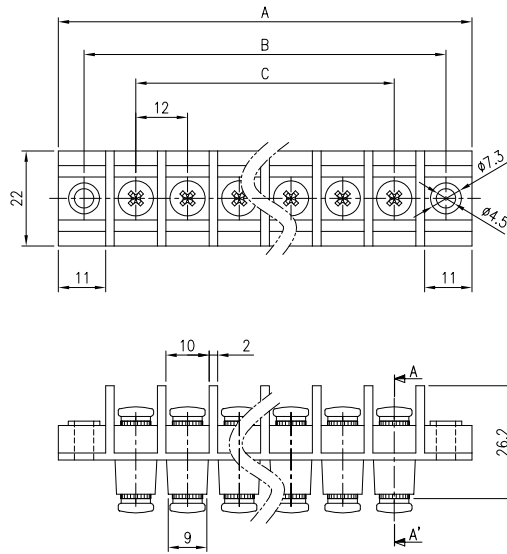


BR-1201YD

(2~20P)



SECTION A-A' (1.5:1)

- Rating : 300V 30A(B,D)/150V 30A(C)
- Insulation Resistance : More Than 1000MΩ DC 500V
- Withstand Voltage : AC2000V Per Minute
- Wire Size / Range : AWG8~16
- Maximum Acceptable Temperature : -40°C ~ +85°C

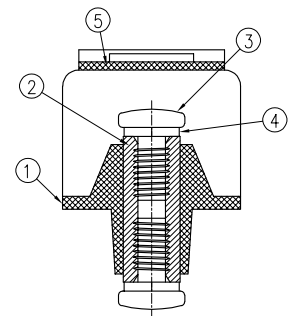
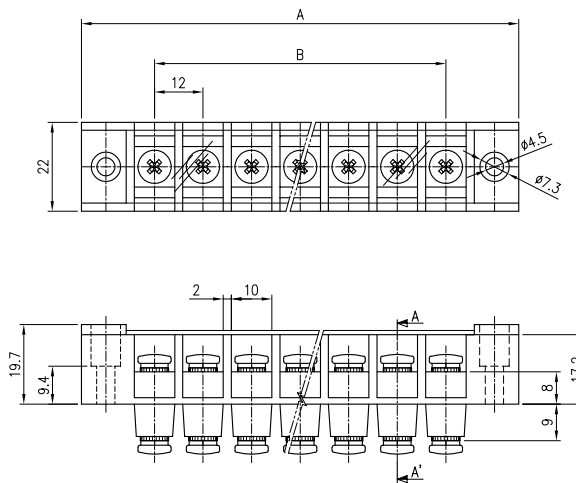
No	Component Part	Material	Standard	Plated	Remark
1	Frame	P.B.T.	UL94V-0	-	-
2	INSERT	BRASS	C3604	-	-
3	Screw	SWCH10A	-	Ni	M4 * 9
4	Spring Washer	HSWR62	-	Ni	Ø 6.7 * Ø 3.7

A-B-C Dimension

P	1	2	3	4	5	6	7	8	9	10	11	12	13	14	15	16	17	18	19	20
A±0.8	-	48	60	72	84	96	108	120	132	144	156	168	180	192	204	216	228	240	252	264
B±0.8	-	36	48	60	72	84	96	108	120	132	144	156	168	180	192	204	216	228	240	252
C±0.5	-	12	24	36	48	60	72	84	96	108	120	132	144	156	168	180	192	204	216	228

BR-1201YDC

(2~20P)



SECTION A-A' (2:1)

- Rating : 300V 30A(B,D)/150V 30A(C)
- Insulation Resistance : More Than 1000MΩ DC 500V
- Withstand Voltage : AC2000V Per Minute
- Wire Size / Range : AWG8~16
- Maximum Acceptable Temperature : -40°C ~ +85°C

No	Component Part	Material	Standard	Plated	Remark
1	Frame	P.B.T.	UL94V-0	-	-
2	INSERT	BRASS	C3604BD	-	-
3	Screw	SWCH10A	-	Ni	M4 * 9
4	Spring Washer	HSWR62	-	Ni	Ø 6.7 * Ø 3.7
5	Cover	P.V.C.	-	-	NAT

A-B-C Dimension

P	1	2	3	4	5	6	7	8	9	10	11	12	13	14	15	16	17	18	19	20
A±0.8	-	48	60	72	84	96	108	120	132	144	156	168	180	192	204	216	228	240	252	264
B±0.8	-	36	48	60	72	84	96	108	120	132	144	156	168	180	192	204	216	228	240	252
C±0.5	-	12	24	36	48	60	72	84	96	108	120	132	144	156	168	180	192	204	216	228

※ 조립식 단자대는 경우에 따라 수축(또는 조립) 공차가 발생할 수 있습니다.