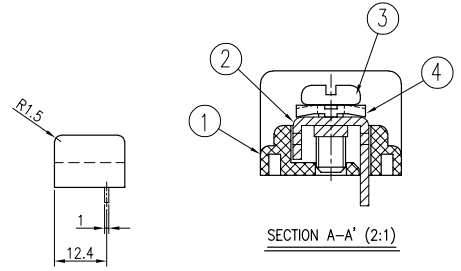
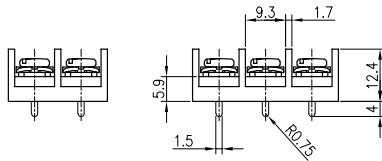
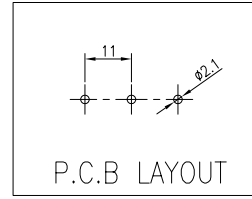
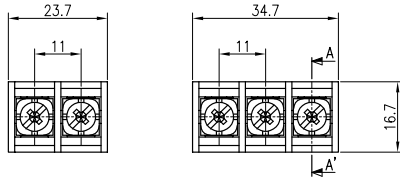


# BR-1103C

(2,3P)



※ Cover Option

- Rating : 250V 20A
- Insulation Resistance : More Than 1000MΩ DC 500V
- Withstand Voltage : AC2000V Per Minute
- Wire Size / Range : AWG14~22
- Maximum Acceptable Temperature : -40°C ~ +85°C

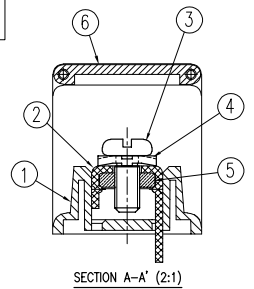
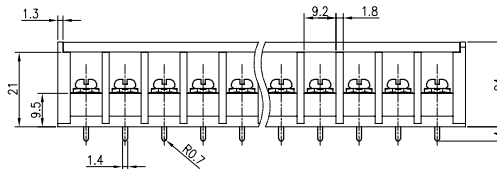
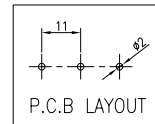
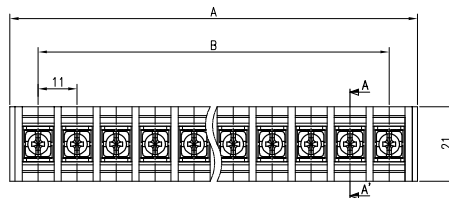
## A-B Dimension

P	2	3
A±0.8	23.7	34.7
B±0.5	11	22

No	Component Part	Material	Standard	Plated	Remark
1	Frame	P.B.T.	UL94V-0	-	-
2	Terminal	BRASS	C2680R	Sn	-
3	Screw	SWCH10A	-	Ni	M3.5 * 8
4	WASHER	SPCC	-	Ni	□ 8.7 * 8.7

# BR-1104C

(2~20P)



※ Cover Option

- Rating : 300V 30A
- Insulation Resistance : More Than 1000MΩ DC 500V
- Withstand Voltage : AC2000V Per Minute
- Wire Size / Range : AWG12~20
- Maximum Acceptable Temperature : -40°C ~ +85°C

## A-B Dimension

P	1	2	3	4	5	6	7	8	9	10	11	12	13	14	15	16	17	18	19	20
A±0.8	-	27	38	49	60	71	82	93	104	115	126	137	148	159	170	181	192	203	214	225
B±0.5	-	11	22	33	44	55	66	77	88	99	110	121	132	143	154	165	176	187	198	209

No	Component Part	Material	Standard	Plated	Remark
1	Frame	P.B.T.	UL94V-0	-	-
2	Terminal	BRASS	C2680R	Sn	-
3	Screw	SWCH10A	-	Ni	M3.5 * 8
4	WASHER	SPCC	-	Ni	□ 8.7 * 8.7
5	Nut	SWCH10A	2.0t	Ni	-
6	Cover	PC	UL94HB	투명	-

※ 조립식 단자대는 경우에 따라 수축(또는 조립) 공차가 발생할 수 있습니다.