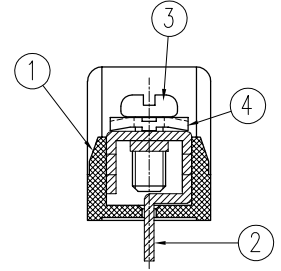
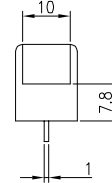
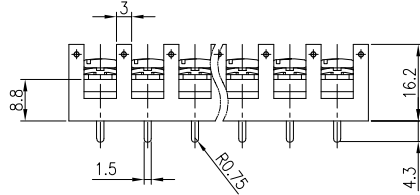
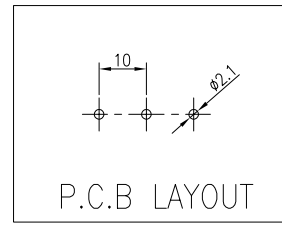
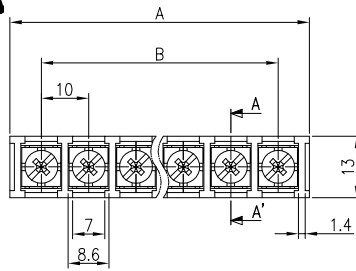


BR-1002C

(2~20P)



※ Cover Option

- Rating : 250V 20A
- Insulation Resistance : More Than 1000M Ω DC 500V
- Withstand Voltage : AC2000V Per Minute
- Wire Size / Range : AWG14~22
- Maximum Acceptable Temperature : -40°C ~ +85°C

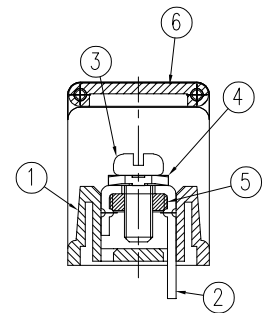
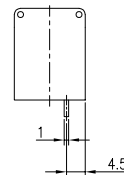
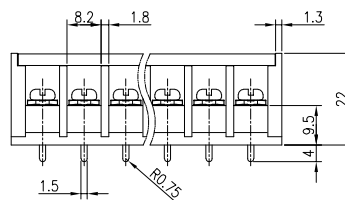
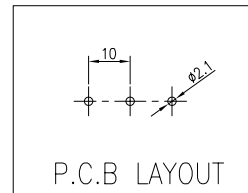
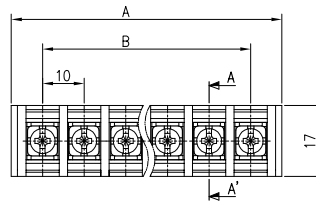
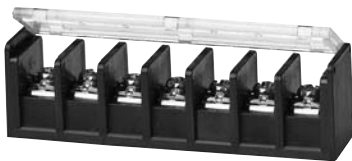
No	Component Part	Material	Standard	Plated	Remark
1	Frame	P.B.T.	UL94V-0	-	-
2	Terminal	BRASS	C2680R	Sn	-
3	Screw	SWCH10A	-	Ni	M3.5*8
4	WASHER	SPCC	-	Ni	$\square 8.2*8.2$

A-B Dimension

P	1	2	3	4	5	6	7	8	9	10	11	12	13	14	15	16	17	18	19	20
A ± 0.8	-	23	33	43	53	63	73	83	93	103	113	123	133	143	153	163	173	183	193	203
B ± 0.5	-	10	20	30	40	50	60	70	80	90	100	110	120	130	140	150	160	170	180	190

BR-1003C

(2~20P)



- Rating : 250V 20A
- Insulation Resistance : More Than 1000M Ω DC 500V
- Withstand Voltage : AC2000V Per Minute
- Wire Size / Range : AWG14~22
- Maximum Acceptable Temperature : -40°C ~ +85°C

No	Component Part	Material	Standard	Plated	Remark
1	Frame	P.B.T.	UL94V-0	-	-
2	Terminal	BRASS	C2680R	Sn	-
3	Screw	SWCH10A	-	Ni	M3.5*8
4	WASHER	SPCC	-	Ni	$\square 7.2*7.2$
5	Nut	SWCH10A	2.0t	Ni	M3.5*0.6
6	Cover	PC	UL94HB	투명	-

A-B Dimension

P	1	2	3	4	5	6	7	8	9	10	11	12	13	14	15	16	17	18	19	20
A ± 0.8	-	25	35	45	55	65	75	85	95	105	115	125	135	145	155	165	175	185	195	205
B ± 0.5	-	10	20	30	40	50	60	70	80	90	100	110	120	130	140	150	160	170	180	190

※ 조립식 단자대는 경우에 따라 수축(또는 조립) 공차가 발생할 수 있습니다.