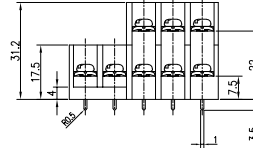
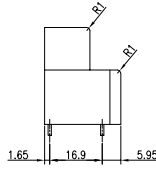
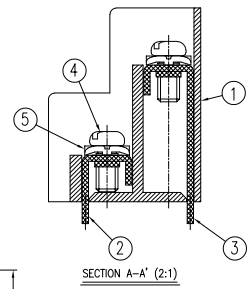
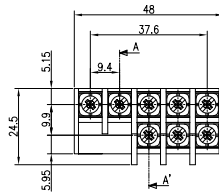
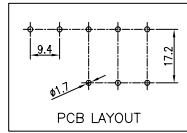


# BR-940C2

(8P)

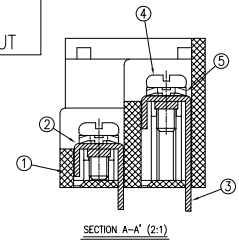
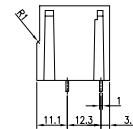
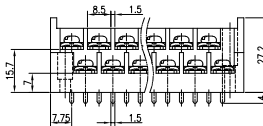
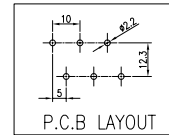
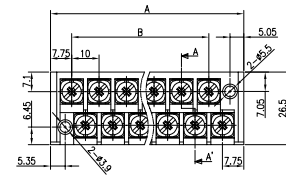


- Rating : 300V 20A
- Insulation Resistance : More Than 1000MΩ DC 500V
- Withstand Voltage : AC2000V Per Minute
- Wire Size / Range : AWG16~22
- Maximum Acceptable Temperature : -40°C ~ +85°C

No	Component Part	Material	Standard	Plated	Remark
1	Frame	P.B.T.	UL94V-0	-	-
2	Terminal #1	BRASS	C2680R	Sn	-
3	Terminal #2	BRASS	C2680R	Sn	-
4	Screw	SWCH10A	-	Ni	M3.5 * 7
5	WASHER	SPCC	-	Ni	□ 7.2 * 7.2

# BR-1000C2

(8~40P)



※ Cover Option

- Rating : 250V 20A
- Insulation Resistance : More Than 1000MΩ DC 500V
- Withstand Voltage : AC2000V Per Minute
- Wire Size / Range : AWG14~22
- Maximum Acceptable Temperature : -40°C ~ +85°C

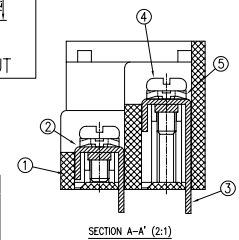
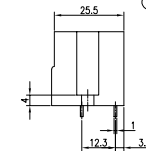
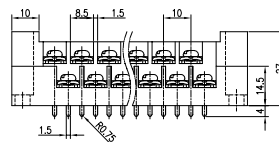
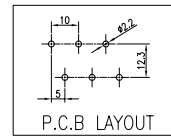
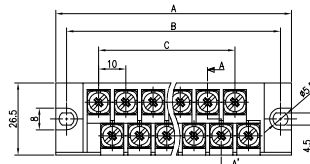
No	Component Part	Material	Standard	Plated	Remark
1	Frame	P.B.T.	UL94V-0	-	-
2	Terminal #1	BRASS	C2680R	Sn	-
3	Terminal #2	BRASS	C2680R	Sn	-
4	Screw	SWCH10A	-	Ni	M3.5 * 8
5	WASHER	SPCC	-	Ni	□ 8.2 * 8.2

## A-B Dimension

P	8	10	12	14	16	18	20	22	24	26	28	30	32	34	36	38	40
A±0.8	50.5	60.5	70.5	80.5	90.5	100.5	110.5	120.5	130.5	140.5	150.5	160.5	170.5	180.5	190.5	200.5	210.5
B±0.5	30	40	50	60	70	80	90	100	110	120	130	140	150	160	170	180	190

# BR-1000D2

(8~40P)



※ Cover Option

- Rating : 250V 20A
- Insulation Resistance : More Than 1000MΩ DC 500V
- Withstand Voltage : AC2000V Per Minute
- Wire Size / Range : AWG14~22
- Maximum Acceptable Temperature : -40°C ~ +85°C

No	Component Part	Material	Standard	Plated	Remark
1	Frame	P.B.T.	UL94V-0	-	-
2	Terminal #1	BRASS	C2680R	Sn	-
3	Terminal #2	BRASS	C2680R	Sn	-
4	Screw	SWCH10A	-	Ni	M3.5 * 8
5	WASHER	SPCC	-	Ni	□ 8.2 * 8.2

## A-B-C Dimension

P	1	8	10	12	14	16	18	20	22	24	26	28	30	32	34	36	38	40
A±0.8	-	66.5	76.5	86.5	96.5	106.5	116.5	126.5	136.5	146.5	156.5	166.5	176.5	186.5	196.5	206.5	216.5	226.5
B±0.8	-	58.5	68.5	78.5	88.5	98.5	108.5	118.5	128.5	138.5	148.5	158.5	168.5	178.5	188.5	198.5	208.5	218.5
C±0.5	-	30	40	50	60	70	80	90	100	110	120	130	140	150	160	170	180	190

※ 조립식 단자대는 경우에 따라 수축(또는 조립) 공차가 발생할 수 있습니다.