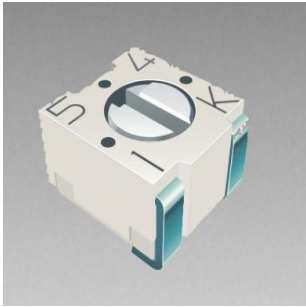


3313J - single turn - : 020300104



- * 가
- * : Cermet
- * : 100 ~ 1MΩ
- * : (220 °)

(Product Features)

- Surface Mount 3 mm Square Single - Turn
- Cermet / Sealed
- Compatible with surface mount manufacturing processes
- Rotor stop for in - circuit " adjustment
- 100 cycle rotational and seal life
- Patent #5043695 assembly for seal integrity
- Plastic housing for RF applications
- RoHS compliant* - see processing information on lead free surface mount trimmers

" 가 " " & "가 .

(Key information)

	100 ~ 1MΩ
	220 ° nom
Power Rating	0.125W at 70 °
Power Rating	0 W at 125 °
Resistance Tolerance	± 20 % std.

Technical Data

Resistive Element	Cermet
Adjustment Travel	Single Turn:220° nom
Resistance Range	100 ~ 1M
Resistance Tolerance	± 20% standard
Power Rating	0.125 W at 70 ° C
Power Rating	0 W at + 125 ° C
Temperatuer Range	- 55 ° C ~ 125 ° C

Specifications

Electrical Characteristics
Standard Resistance Range

..... 10 ohms to 2 megohms
 (see standard resistance table)

Resistance Tolerance ±20 % std.

End Resistance 1 % or 3 ohms max.
 (whichever is greater)

Contact Resistance Variation

..... 3 % or 3 ohms

Adjustability

Voltage Divider ±0.1 %

Rheostat..... ±0.2 %

Resolution Infinite

Insulation Resistance 500 vdc.
 100 megohms min.

Dielectric Strength

Sea Level..... 500 vac

70,000 Feet 350 vac

Adjustment Angle 220° nom.

Electrical Characteristics

Environmental Characteristics

Max. Soldering Exposure	260 °C/5 seconds
Power Rating (200 volts max.)	
70 °C	0.125 watt
125 °C	0 watt
Operating Temp. Range	-55 °C to +125 °C
Temperature Coefficient	
	≤100 ohms ±150 ppm/°C;
	>100 ohms ±100 ppm/°C
Seal Test	85 °C Fluorinert†
Humidity	MIL-STD 202, Method 106 (no vibration) TRS ±3 %; IR 10 megohms
Vibration	20 G TRS ±1 %; VRS ±1 %
Shock	100 G TRS ±1 %; VRS ±1 %
Load Life	1000 hours @ 70 °C Rated Power; TRS ± 3 %
Rotational Life	100 cycles TRS ±3 %
Thermal Shock	5 cycles TRS ±2 %; VRS ±1 %

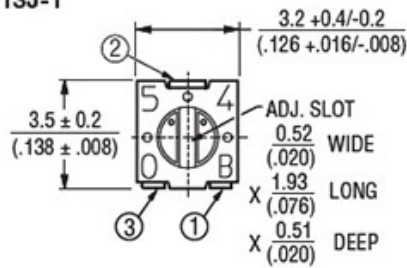
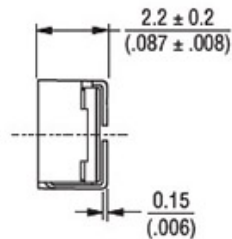
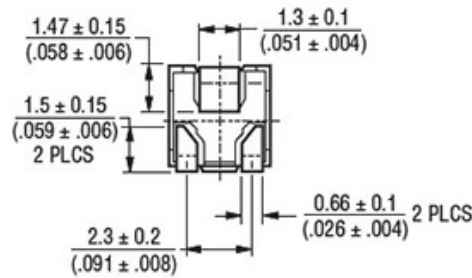
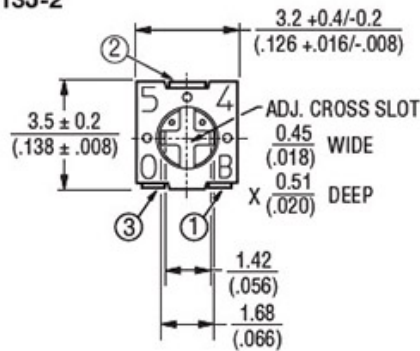
Environmental Characteristics

Physical Characteristics

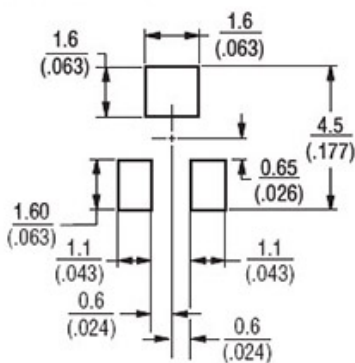
Mechanical Angle	250 ° nom.
Torque.....	50 g-cm max.
Stop Strength	200 g-cm min.
Pushover Strength (“S” Style only)	
.....	1.6 Kilograms (3.5 lbs) minimum
Flammability	U.L. 94V-0
Weight	Approx. 0.01 oz.
Marking.....	Resistance code and date code
Wiper	50 % (Actual TR) ±10 %
Standard Packaging	
J, X Styles (MSL-1)	1000 pcs./7 ” reel
S Style (MSL-1).....	200 pcs./7 ” reel
Adjustment Tool.....	H-91

Physical Characteristics

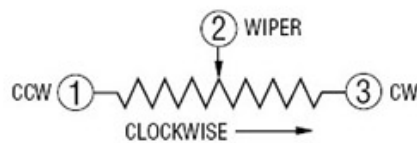
Drawing

3313J-1

3313J-2


RECOMMENDED LAND PATTERN



DIMENSIONS: $\frac{\text{MM}}{(\text{INCHES})}$
 TOLERANCES: $\pm \frac{0.25}{(.010)}$ EXCEPT WHERE NOTED



Dimension

DONGYANG ELECTRIC IND

TEL: 02 - 716 - 6737~8 FAX: 02 - 701 - 8424 E - mail: webmaster@dongyangele.co.kr www.dongyangele.co.kr

Specifications are subject to change without notice. Specifications in this catalog are just for reference. The detail specification and drawing sheets will be provided upon request. Copyright. 2013 DONGYANG Electronic Inc. All rights reserved