

Specification Sheet

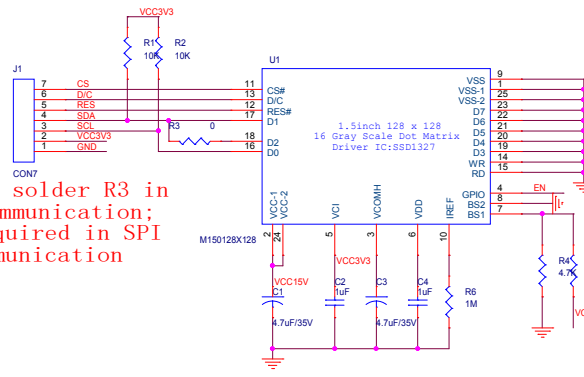
Model No. : ZJY061

Description : 1.5inch OLED Screen resolution 128*128
Size:34*47mm Driver Chip SSD1327 interface SPI/IIC 7Pin
Voltage 3.3V Font Color Option White ZJY061

1.32"128x96 OLED module schematic communication interface
 is SPI / IIC default shipping form is SPI interface

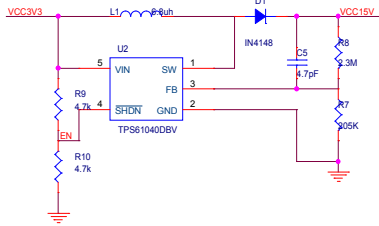
淘宝地址: <http://shop73023976.taobao.com/?spm=a1z10.1.0.0.byBTLt&v=1>

Interface type: SPI/IIC interface (default SPI)



Need to solder R3 in
 IIC communication;
 not required in SPI
 communication

SPI/IIC configuration:
 SPI: R4 soldering,
 R5, R3 floating IIC:
 R5, R3 soldering, R4
 floating



When EN is low, the boost
 circuit can be turned off.
 The default R10 is not
 soldered.