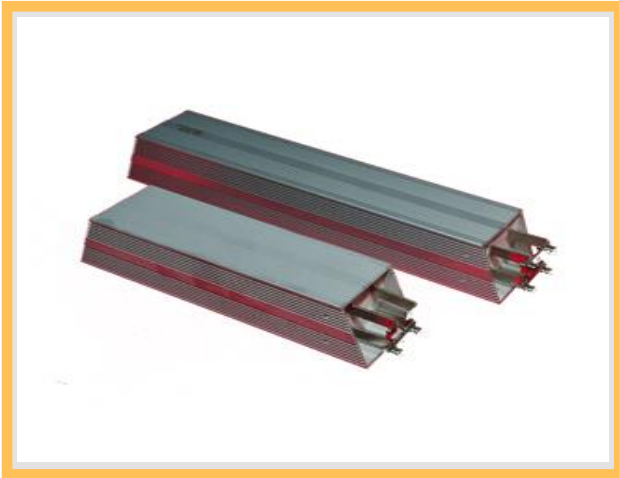


## ○ 대전력형 메탈클레드저항기

## POWER METAL CLAD RESISTOR



### 대전력 제동 저항기 PRV 600W – 1200W

The PRV(V=Vertical) 600~1200 watt models are metal-clad, wire-wound, high-power resistors designed for industrial and other applications where high wattage is a must. Our extruded aluminum housing provides rugged and strong protection. Most common applications for these models are motor drives, braking and snubber applications and power sources for industrial equipment.

### General Specifications

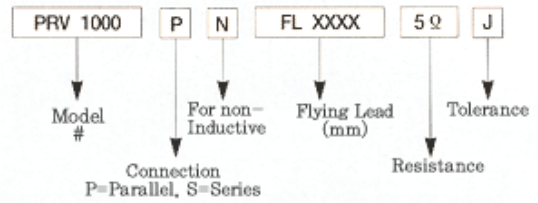
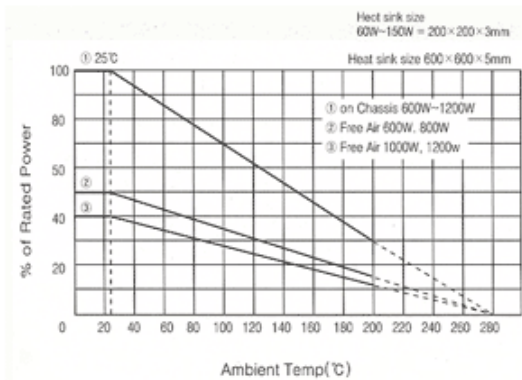
Model	Wattage with Heat Sink	Resistance Range ( $\Omega$ )			Resistance Tolerance
		Inductive		Non-Inductive Parallel	
		Parallel	Series		
PRV 600	600	0.1 - 9	9.1 - 94	0.1 - 20	$\pm 0.5(D)$
PRV 800	800	0.1 - 11	11.1 - 112	0.1 - 24	$\pm 1.0(F)$
PRV 1000	1000	0.1 - 18	18.1 - 140	0.1 - 34	$\pm 2.0(G)$
PRV 1200	1200	0.1 - 25	25.1 - 160	0.1 - 40	$\pm 5.0(J)$ $\pm 10(K)$

### Characteristics

Temperature Range	-55°C~280°C
Insulation Resistance	20M $\Omega$ minimum
Dielectric Withstanding Voltage	Available options : AC 1500V, 2500V, 3500V, 4500V for 1minute, (Max leakage current : 2mA)
Temp. Coefficient	$\pm 260\text{ppm}/^\circ\text{C}$
Short Time Overload	$\pm [3\%+0.05\Omega]$ 5-10 x power rating - in 5 seconds
Moisture Resistance	$\pm [3\%+0.05\Omega]$ 40°C, 95%RH, DC100V case to terminal(500hrs)
Thermal Shock	$\pm [5\%+0.05\Omega]$ Power rating 30 min., -40°C, 15minutes
Vibration	$\pm [2\%+0.05\Omega]$ 10Hz - 55Hz - 10Hz(1min.), 2hrs each direction
Moisture Load Life	$\pm [3\%+0.05\Omega]$ 40°C, 95%RH, 0.1x POWER rating, 1.5h.on, 30min. off, 500hours.
Load Life	$\pm [5\%+0.05\Omega]$ Power rating 1.5h. on, 30min. off, 500hours.

Values in [ ] mean change in  $\Omega$  after test

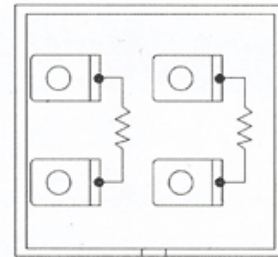
## Surface Temperature Curves & Derating Curves



If you require flying lead resistors please add 'FL' next to the model number or non-inductive symbol 'N' Also add the length of the flying lead in millimeter.

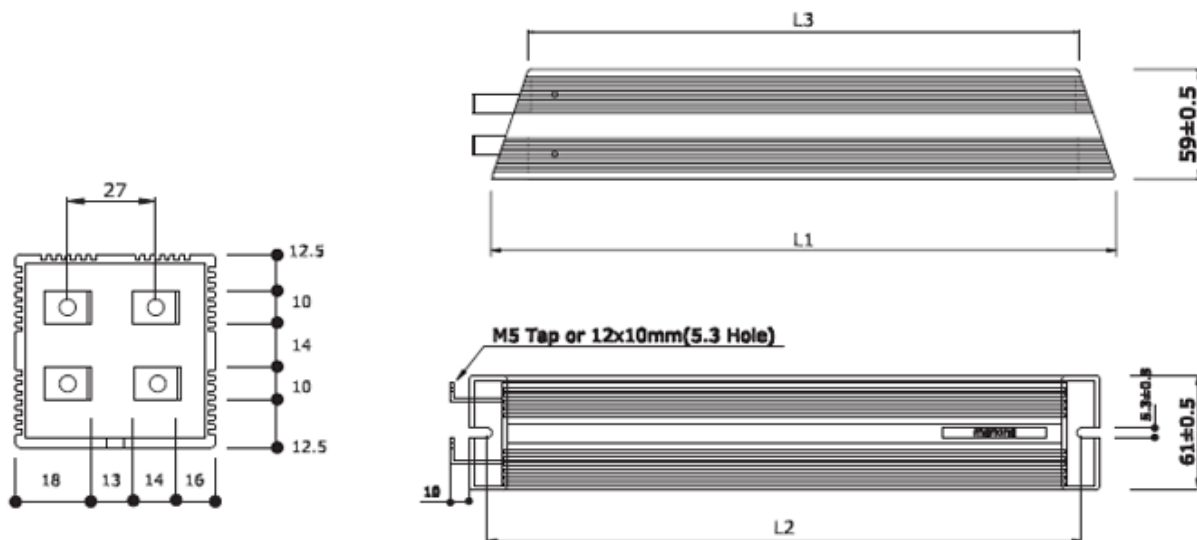
## Dimensions

Model	Dimensions(mm)			Weight(g)	Flying lead	
	L1±2	L2±2	L3±2		8 mm <sup>f</sup>	5.5 mm <sup>f</sup>
PRV600	235	216	195	1165		
PRV800	285	266	245	1500	0.1Ω	
PRV1000	335	316	295	1835	~	1Ω
PRV1200	405	386	365	2304	0.99Ω	



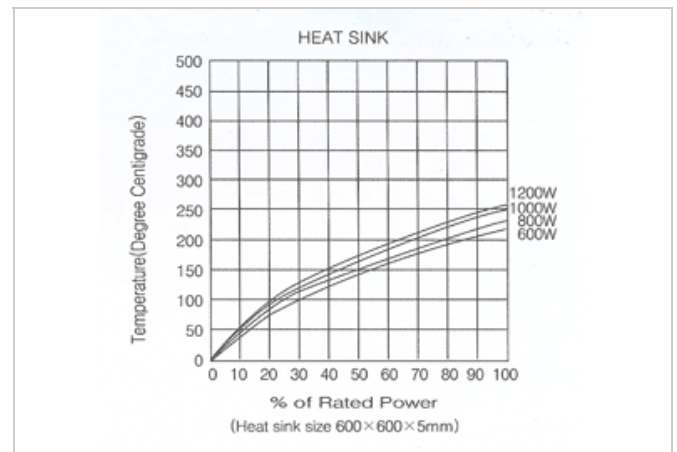
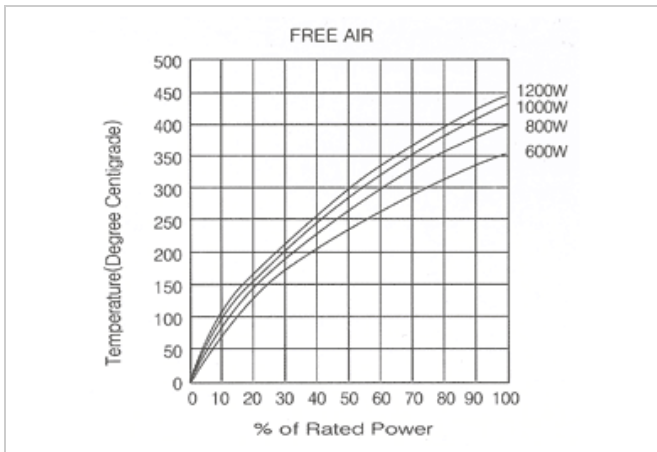
Each model in this range contains two identical, isolated resistors with two sets of terminals, a left upper and lower for one resistor, & a right upper and lower for the other, which can be connected in either series or parallel.

## Dimensions



**UNI RESISTORS (UNIKOR)**

## Surface Temperature Increase Versus Power Load



**UNI RESISTORS (UNIKOR)**