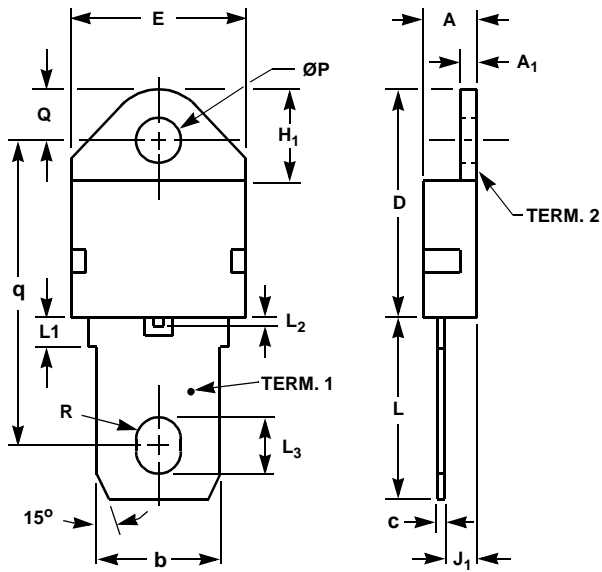


TO-218

SINGLE LEAD JEDEC STYLE TO-218 PLASTIC PACKAGE



SYMBOL	INCHES		MILLIMETERS		NOTES
	MIN	MAX	MIN	MAX	
A	0.18	0.195	4.70	4.95	-
A ₁	0.05	0.062	1.48	1.57	-
b	0.43	0.443	11.0	11.2	-
c	0.01	0.022	0.46	0.55	-
D	0.80	0.820	20.3	20.8	-
E	0.61	0.625	15.6	15.8	2
H ₁	-	0.330	-	8.38	-
J ₁	0.11	0.125	2.93	3.17	4
L	0.63	0.655	16.1	16.6	-
L ₁	-	0.130	-	3.30	-
L ₂	-	0.034	-	0.86	-
L ₃	0.19	0.205	4.96	5.20	-
ØP	0.15	0.163	4.04	4.14	-
Q	0.17	0.186	4.48	4.72	2
q	1.08	1.088	27.4	27.6	-
R	0.07	0.082	1.99	2.08	-

NOTES:

1. No current JEDEC outline for this package.
2. Tab outline optional within boundaries of dimensions E and Q.
3. Maximum radius of 0.050 inches (1.27mm) on all body edges and corners.
4. Position of lead to be measured 0.100 inches (2.54mm) from bottom of dimension D.
5. Controlling dimension: Inch.
6. Revision 1 dated 1-93.