



STL(Z) 130/.. - 5.0 (5.08) - V - BLACK

**2-24 (2-16) poles, Spacing 5,0 mm or 5,08 mm
insert required no. of poles ..**

How to order see page 11

Ratings:

* factory wiring

		
Rated Voltage	300 V	250 V
Rated Current	10 A	10 A (T55)
Overtoltage Category		III
Rating Impulse Voltage/Dirt Level		4 kV/3

Dimensions

Spacing	5,0 mm (5,08 mm)
PCB Hole Diameter	1,5 mm

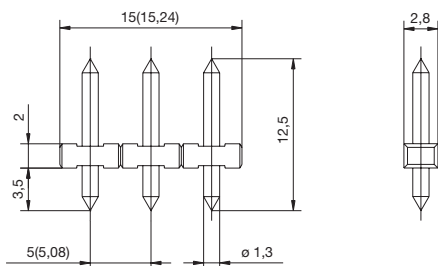
Materials

Insulating Material	PA
Flammability Class	UL94 V-0
Temperature Range	-30°C/+105°C
Contact Pin	CuZn

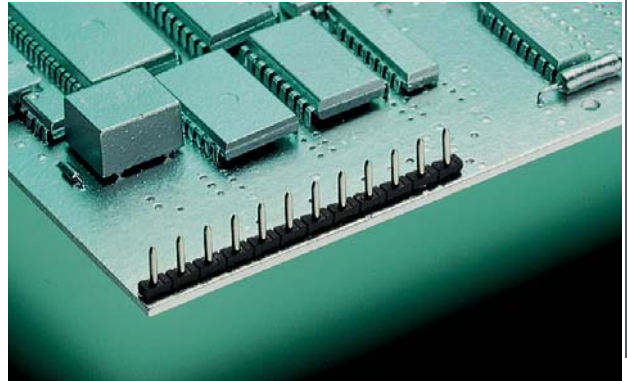
Colour

black	RAL 9011
-------	----------

STL(Z) 130 VERTICAL



THR-Variant





STL 130/.. - 5.0 - V - BLACK - HT

**2-24 poles, Spacing 5,0 mm
insert required no. of poles ..**

How to order see page 11

Ratings:

		
Rated Voltage	300 V	250 V
Rated Current	10 A	10 A (T55)
Overtoltage Category		III
Rating Impulse Voltage/Dirt Level		4 kV/2

Dimensions

Spacing	5,0 mm
PCB Hole Diameter	1,5 mm

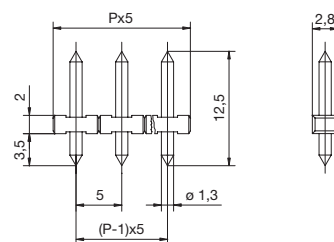
Materials

Insulating Material	LCP
Flammability Class	UL94 V-0
Temperature Range	-30°C/+105°C
Contact Pin	CuZn

Colour

black	RAL 9011
-------	----------

STL 130 VERTICAL



P = Polzahl