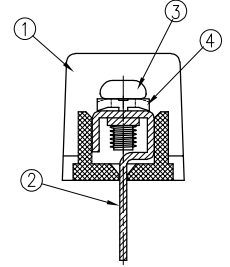
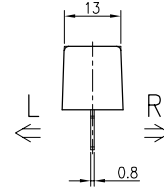
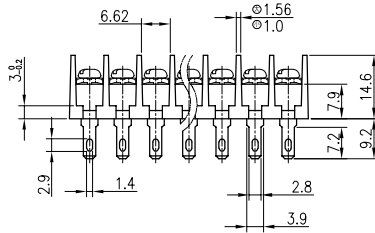
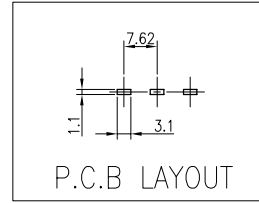
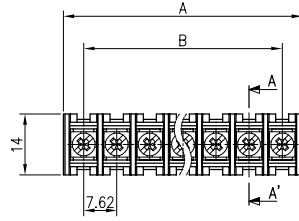
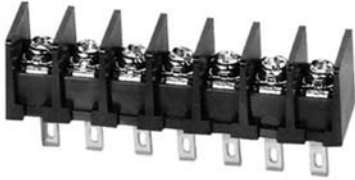


# BR-762A(\*L)

(2~30P)



SECTION A-A' (2:1)

(\*L) = Option  
 ※ Cover Option

- Rating : 250V 10A
- Insulation Resistance : More Than 1000MΩ DC 500V
- Withstand Voltage : AC2000V Per Minute
- Wire Size / Range : AWG18~26
- Maximum Acceptable Temperature : -40°C ~ +85°C

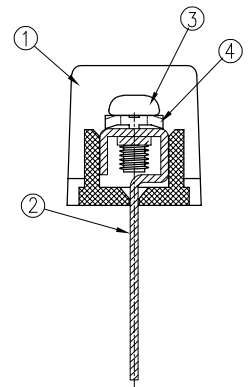
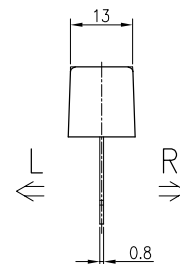
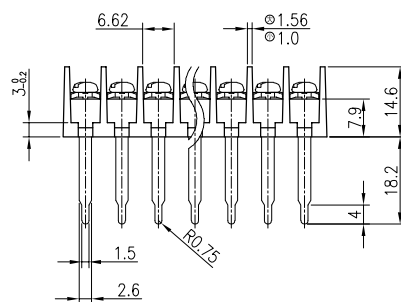
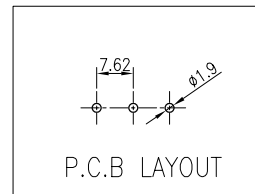
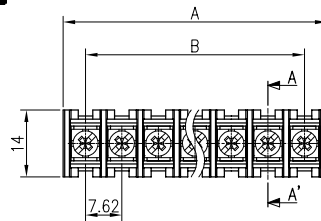
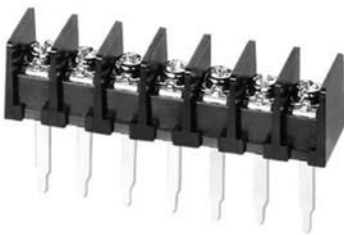
No	Component Part	Material	Standard	Plated	Remark
1	Frame	P.B.T.	UL94V-0	-	-
2	Terminal	BRASS	C2680R	Sn	-
3	Screw	SWCH10A	-	Ni	M3 * 6
4	WASHER	SPCC	-	Ni	□ 6 * 6

## A-B Dimension

P	1	2	3	4	5	6	7	8	9	10	11	12	13	14	15	16	17	18	19	20	21	22	23	24	25	26	27	28	29	30
A±0.8	-	16.94	24.56	32.18	39.8	47.42	55.04	62.66	70.28	77.9	85.52	93.14	100.76	108.38	116	123.62	131.24	138.86	146.48	154.1	161.72	169.34	176.96	184.58	192.2	199.82	207.44	215.06	222.68	230.3
B±0.5	-	7.62	15.24	22.86	30.48	38.1	45.72	53.34	60.96	68.58	76.2	83.82	91.44	99.06	106.68	114.3	121.92	129.54	137.16	144.78	152.4	160.02	167.64	175.26	182.88	190.5	198.12	205.74	213.36	220.98

# BR-762E(\*L)

(2~30P)



SECTION A-A' (2:1)

(\*L) = Option  
 ※ Cover Option

- Rating : 250V 10A
- Insulation Resistance : More Than 1000MΩ DC 500V
- Withstand Voltage : AC2000V Per Minute
- Wire Size / Range : AWG18~26
- Maximum Acceptable Temperature : -40°C ~ +85°C

No	Component Part	Material	Standard	Plated	Remark
1	Frame	P.B.T.	UL94V-0	-	-
2	Terminal	BRASS	C2680R	Sn	-
3	Screw	SWCH10A	-	Ni	M3 * 6
4	WASHER	SPCC	-	Ni	□ 6 * 6

## A-B Dimension

P	1	2	3	4	5	6	7	8	9	10	11	12	13	14	15	16	17	18	19	20	21	22	23	24	25	26	27	28	29	30
A±0.8	-	16.94	24.56	32.18	39.8	47.42	55.04	62.66	70.28	77.9	85.52	93.14	100.76	108.38	116	123.62	131.24	138.86	146.48	154.1	161.72	169.34	176.96	184.58	192.2	199.82	207.44	215.06	222.68	230.3
B±0.5	-	7.62	15.24	22.86	30.48	38.1	45.72	53.34	60.96	68.58	76.2	83.82	91.44	99.06	106.68	114.3	121.92	129.54	137.16	144.78	152.4	160.02	167.64	175.26	182.88	190.5	198.12	205.74	213.36	220.98