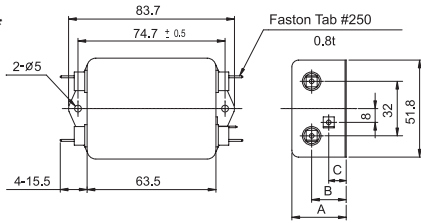
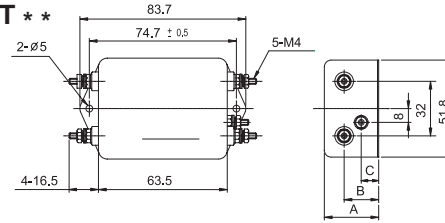


Shapes and Dimensions

ES1-F **

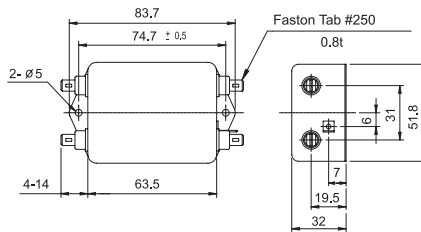


ES1-T **

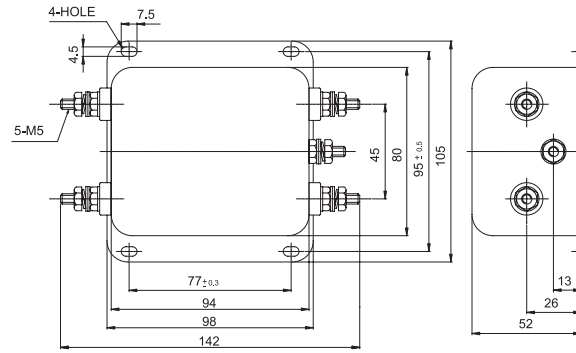


MODEL	A	B	C
ES1-∗10, 15, 20	38	24	11
ES1-∗05, 08	32	20	8

ES1-F20-B



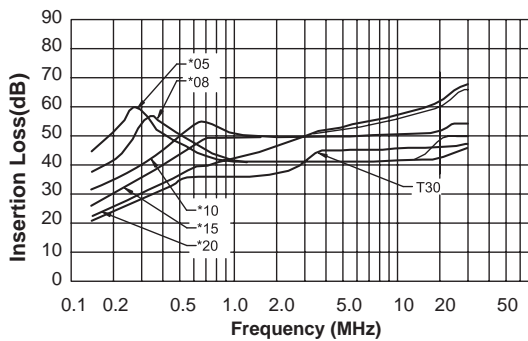
ES1-T30



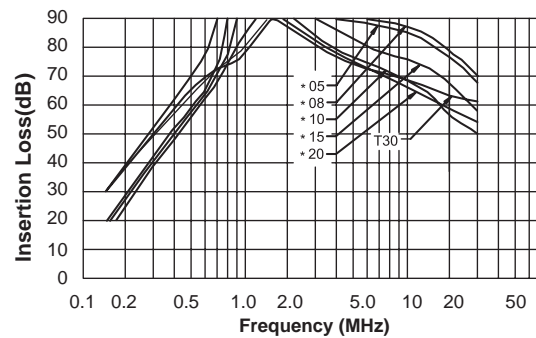
* General tolerance : ± 1.0
 * Unit : mm
 * Metal Case

Attenuation Characteristics

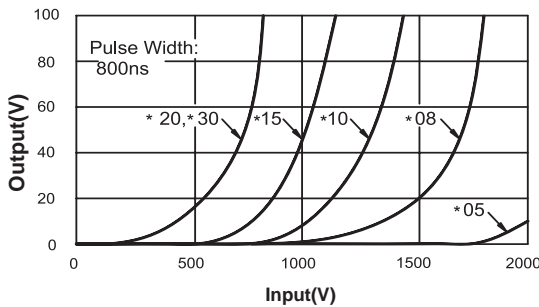
● Common Mode (ES1-(∗05,∗08,∗20,T30)types)



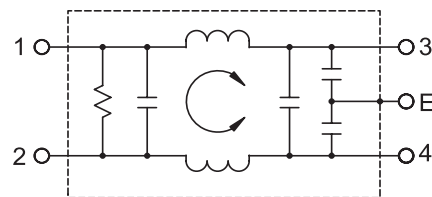
● Differential Mode (ES1-(∗05,∗08,∗20,T30)types)



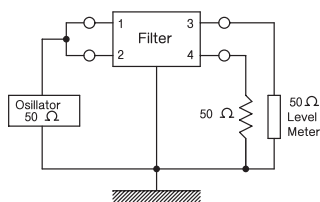
● Impulse Characteristics



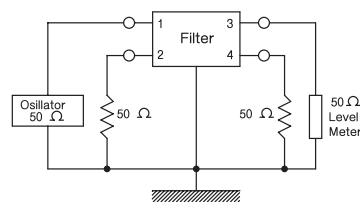
● Circuit Diagram



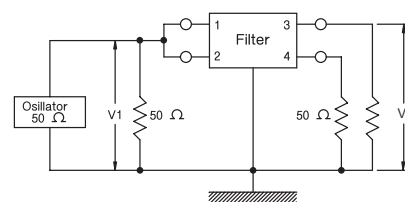
● Measurement configuration



Common Mode



Differential Mode



Pulse attenuation