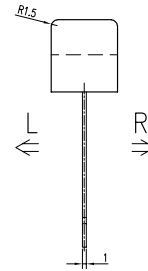
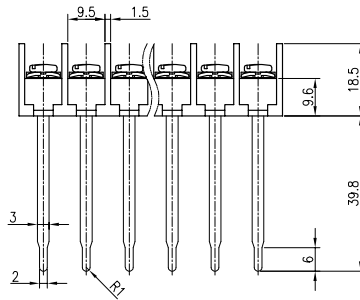
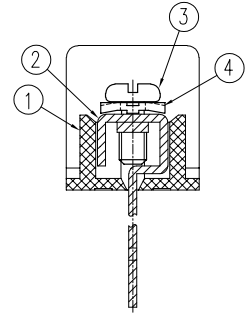
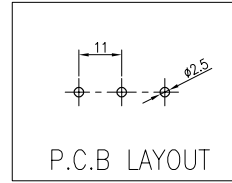
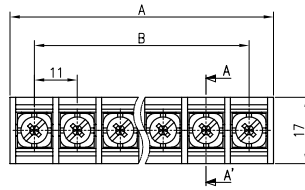
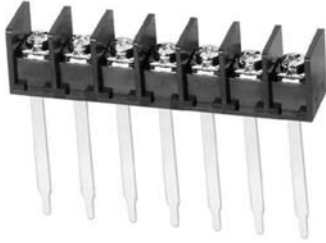


BR-1100F(*L)



(2~20P)



(*L) = Option
* Cover Option

- Rating : 250V 20A
- Insulation Resistance : More Than 1000MΩ DC 500V
- Withstand Voltage : AC2000V Per Minute
- Wire Size / Range : AWG14~22
- Maximum Acceptable Temperature : -40°C ~ +85°C

No	Component Part	Material	Standard	Plated	Remark
1	Frame	P.B.T.	UL94V-0	-	-
2	Terminal	BRASS	C2680R	Sn	-
3	Screw	SWCH10A	-	Ni	M3.5 * 8
4	WASHER	SPCC	-	Ni	□ 8.7 * 8.7

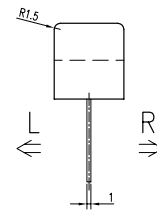
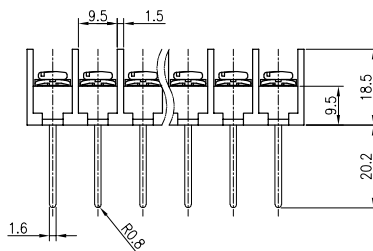
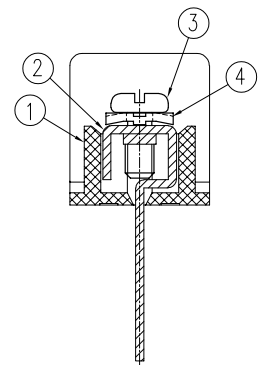
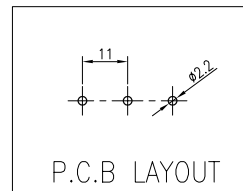
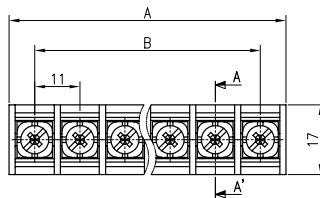
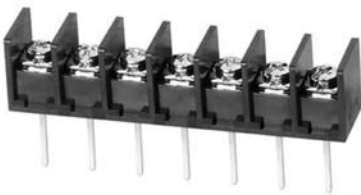
A-B Dimension

P	1	2	3	4	5	6	7	8	9	10	11	12	13	14	15	16	17	18	19	20
A±0.8	-	23.5	34.5	45.5	56.5	67.5	78.5	89.5	100.5	111.5	122.5	133.5	144.5	155.5	166.5	177.5	188.5	199.5	210.5	221.5
B±0.5	-	11	22	33	44	55	66	77	88	99	110	121	132	143	154	165	176	187	198	209

BR-1100K(*L)



(2~20P)



(*L) = Option
* Cover Option

- Rating : 250V 20A
- Insulation Resistance : More Than 1000MΩ DC 500V
- Withstand Voltage : AC2000V Per Minute
- Wire Size / Range : AWG14~22
- Maximum Acceptable Temperature : -40°C ~ +85°C

No	Component Part	Material	Standard	Plated	Remark
1	Frame	P.B.T.	UL94V-0	-	-
2	Terminal	BRASS	C2680R	Sn	-
3	Screw	SWCH10A	-	Ni	M3.5 * 8
4	WASHER	SPCC	-	Ni	□ 8.7 * 8.7

A-B Dimension

P	1	2	3	4	5	6	7	8	9	10	11	12	13	14	15	16	17	18	19	20
A±0.8	-	23.5	34.5	45.5	56.5	67.5	78.5	89.5	100.5	111.5	122.5	133.5	144.5	155.5	166.5	177.5	188.5	199.5	210.5	221.5
B±0.5	-	11	22	33	44	55	66	77	88	99	110	121	132	143	154	165	176	187	198	209

P.C.B