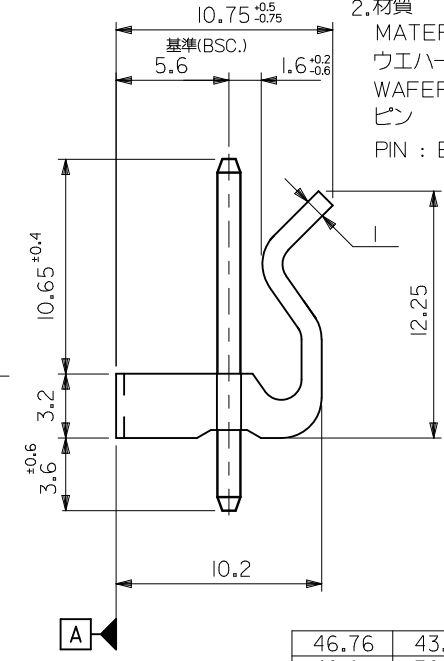
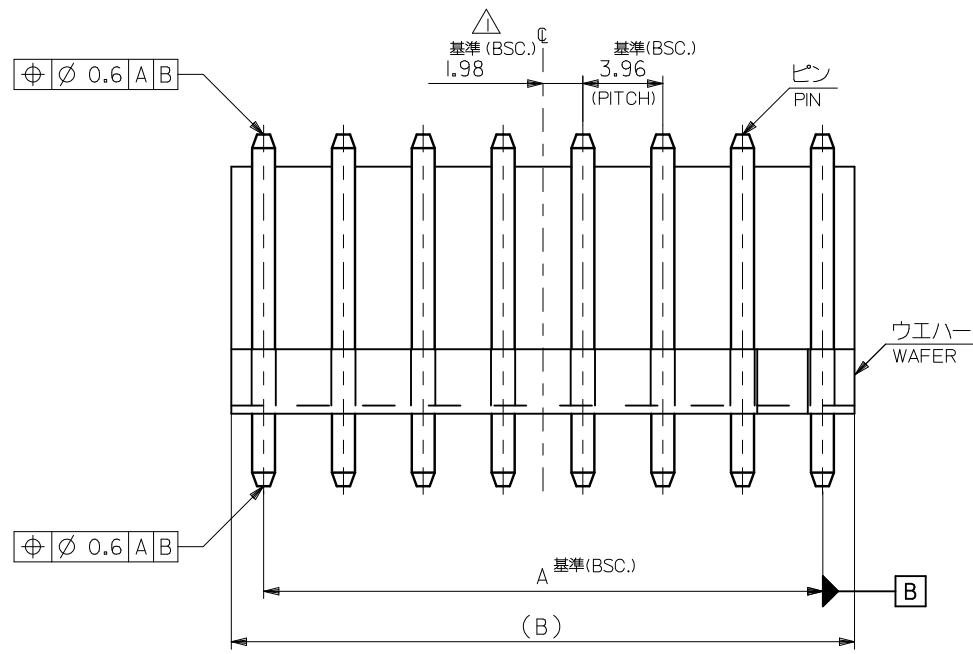


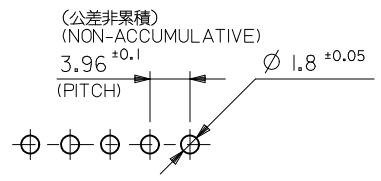
注記
NOTES

△全極数が偶数の場合のみ適用。
TO BE APPLIED ONLY WHEN ALL CKTS ARE EVEN.

2.材質
MATERIAL
ウエハー : 66ナイロン, UL94V-2
WAFER : 66NYLON, UL-94V-2
ピン : 黄銅, 銅下地錫メッキ (□1.14X17.45)
PIN : BRASS, TIN OVER COPPER PLATING (□1.14X17.45)



⊕ ∅ 0.6 A B



基板取付穴推奨寸法
RECOMMENDED P.C.BOARD HOLE DIM.

46.76	43.56	09-65-2128	5273-12A	12
42.8	39.6	▲ -2118	▲ -11A	11
38.84	35.64	-2108	-10A	10
34.88	31.68	-2098	-09A	9
30.92	27.72	-2088	-08A	8
26.96	23.76	-2078	-07A	7
23	19.8	-2068	-06A	6
19.04	15.84	-2058	-05A	5
15.08	11.88	-2048	-04A	4
11.12	7.92	▼ -2038	▼ -03A	3
7.16	3.96	09-65-2028	5273-02A	2
B	A	オーダー番号 (EDP NO.) ORDER NO. (EDP NO.)	ENG. NO.	極数 CKTS

REVISED EC NO.: J2009-2884 DRWN: YSHIBATA 2009/06/23 CHKD: THARUYAMA 2010/03/15 APPR: NUKITA 2010/03/15	GENERAL TOLERANCES (UNLESS SPECIFIED)		DIMENSION STYLE MM ONLY		SCALE ---		DESIGN UNITS METRIC		THIRD ANGLE PROJECTION	
	10 UNDER	±0.2	DRAWN BY S. MOCHIZUKI	DATE 1989/05/12	TITLE KK 3.96 WAFER ASSY WITH LOCK					
	10 OVER 30 UNDER	±0.25	CHECKED BY H.H.	DATE 1991/04/10	MOLEX INCORPORATED					
	30 OVER	±0.3	APPROVED BY M. ENOMOTO	DATE 1991/04/10	DOCUMENT NO. SD-5273-001					
REV	DESCRIPTION	ANGULAR ±3 °	DRAFT WHERE APPLICABLE MUST REMAIN WITHIN DIMENSIONS		SIZE A3		THIS DRAWING CONTAINS INFORMATION THAT IS PROPRIETARY TO MOLEX INCORPORATED AND SHOULD NOT BE USED WITHOUT WRITTEN PERMISSION			

Mouser Electronics

Authorized Distributor

Click to View Pricing, Inventory, Delivery & Lifecycle Information:

[Molex:](#)

[09-65-2098](#)